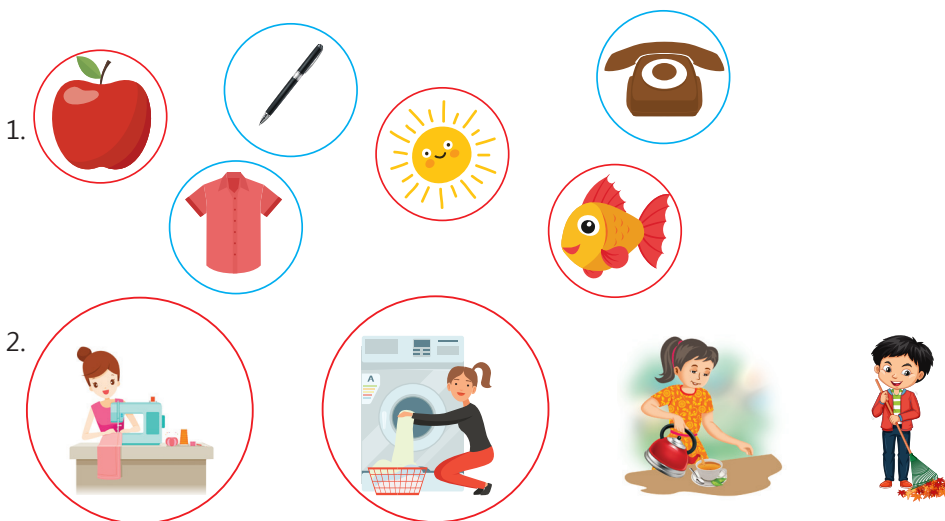


# ANSWER KEY

Touchpad PRIME Ver 2.0

Class-I

## 1. What are Machines?



### Word Bank

Do yourself.

### Rapid fire

- a. (i)                      b. (ii)                      c. (i)                      d. (i)
- a. Sharpener              b. Clock                      c. Air Conditioner
- a. (iii)                      b. (iv)                      c. (i)                      d. (ii)

### Evaluation Time

- a. time                      b. machine                      c. nature
- a. 1. Sun 2. Tree                      b. 1. Cycle 2. Sharpener                      c. 1. Chair 2. Table

### Activity Time

- Do yourself.



2.



M



A



C



H



I



N



E

New word is: MACHINE

### Find Out

Do yourself.

### Group Task

Do yourself.



### In The Lab

Do yourself.

## 2. Exploring a Computer



1. time

2. electricity

3. mistake

### Word Bank

Do yourself.

### Rapid fire

1. a. (iii)      b. (ii)      c. (iii)

2. b. c.

### Evaluation Time

1. a. smart      b. works      c. messages      d. watch



2. a. 1. Do sums, 2. Send e-mails  
c. 1. Stitching, 2. Washing cloths

- b. 1. Hospital, 2. Shop

**Activity Time**

- a. Home      b. Hospital      c. School



Do yourself.

**Periodic Assessment-1**

(Based on chapters 1 & 2)



- B. **Painting**      Watching TV      Bathing      Drinking
- Sleeping      Solving Sums      Chatting      Booking Tickets
- Washing Clothes      Drawing      Playing games
- Typing letters      Watching movies      Making mistakes

- C. 1. T      2. F      3. F

**3. Familiarity with Computer Parts**



**Word Bank**

Do yourself.

### Rapid Fire

- (iii)
  - (iii)
  - (iii)
- F
  - T
  - F
  - T

### Evaluation Time

- mouse
  - monitor
  - speakers
  - keys
- Speakers
  - CPU
  - F
  1. CPU 2. Monitor

### Activity Time

1.

A crossword puzzle grid with the following words filled in:

- MONITOR (vertical, top to bottom)
- KEYBOARD (vertical, top to bottom)
- PRINTER (horizontal, left to right)
- COMPUTER (horizontal, left to right)
- MOUSE (vertical, left to right)

Small icons of a monitor, printer, mouse, keyboard, and CPU tower are placed around the grid.

2.

A diagram of a desktop computer system with the following components labeled:

- Monitor
- CPU
- Speakers
- Keyboard
- Mouse



### Find Out

Do yourself.

### Group Task

Do yourself.



### In The Lab

Do yourself.

## 4. Exploring the Keyboard



### Word Bank

Do yourself.

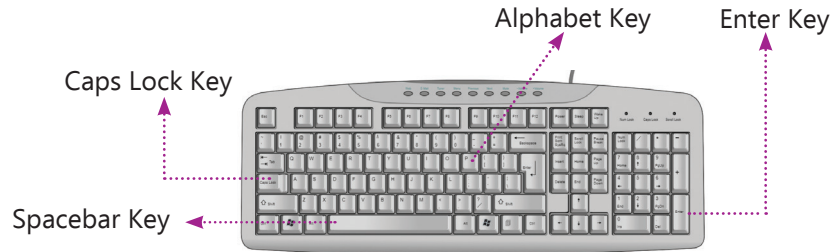
### Rapid Fire

- a. (iii)      b. (ii)      c. (ii)
- a. (ii)      b. (iv)      c. (i)      d. (iii)

### Evaluation Time

- a. 104      b. Spacebar      c. Caps Lock      d. backspace
- a. All the keys on the keyboard which have letters from A to Z written on them are called Alphabet keys.  
b. 1. Enter Key 2. Delete Key

## Activity Time



## In The Lab

Do yourself.

## Periodic Assessment-2

(Based on chapters 3 & 4)

- A.** 1. Mouse      2. Keyboard      3. CPU      4. Speakers  
**B.** 1. SPACEBAR      2. ENTER      3. BACKSPACE      4. MONITOR  
5. KEYBOARD      6. MOUSE  
**C.** 1. c.      2. d.      3. a.      4. b.

## Test Sheet-1

(Based on chapters 1 to 4)

- 1.** a. (ii)      b. (i)      c. (i)      d. (i)  
**2.** a. 10      b. alphabet      c. teach      d. speakers      e. CPU  
**3.** a. 1. Cycle 2. Sharpener      b. 1. Hospital 2. School  
**4.** a. 1. It can work very fast      2. It never makes a mistake  
b. Enter key is used to move the cursor to the next line.  
c. Delete key is used to erase letters and numbers, one by one to the right of the cursor.

## 5. Exploring the Mouse



Do your self.



Touchpad PRIME (Version 2.0)-I (Answer Key)

## Word Bank

Do yourself.

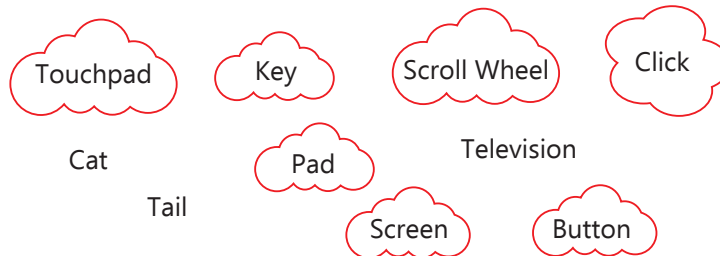
## Rapid Fire

- a. (ii)                      b. (i)                      c. (i)
- a. (iii)                      b. (iv)                      c. (ii)                      d. (i)

## Evaluation Time

- Scroll wheel, Right mouse button, Palm rest, Wire, Left mouse button
- Click is used to select an item.
- Drag and drop action is used to move icon from one place to another.
- Right-click is used to open properties of any program like Paint.

## Activity Time







## In The Lab

Do yourself.

# 6. Let's Use Tux Paint



-  Paint tool
-  Shape tool
-  Quick tool
-  Open tool

## Word Bank

Do yourself.

## Rapid Fire

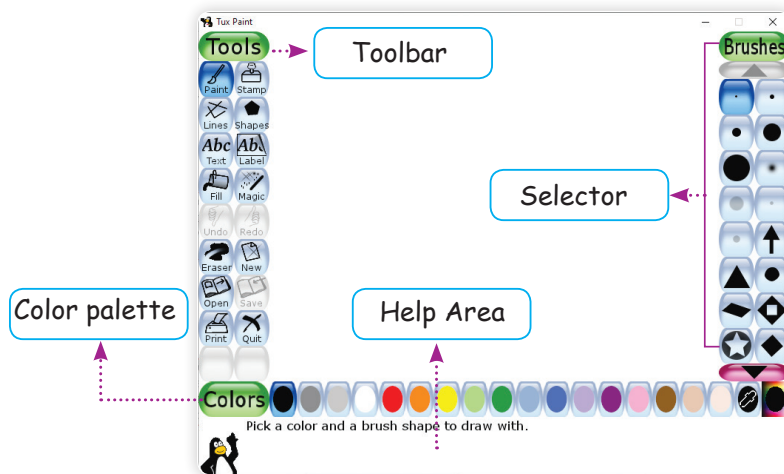
- a. (iii)                      b. (i)                      c. (iii)
- a. T                              b. T                      c. F

## Evaluation Time

- a. colours                                      b. drawing canvas  
c. help area                                      d. paint
- a. 1. Toolbar 2. Selector                      b. Shapes Tool

## Activity Time

Label the components of the Tux Paint window.



## Find Out

Do yourself.

## Group Task

Do yourself.



## In The Lab

Do yourself.





## Periodic Assessment-3

(Based on chapters 5 & 6)

A.



- B.
1. Selector Toolbar helps you to choose from different options that we get as a tool is selected.
  2. Color palette contains different colours.
  3. Tux Paint is used to draw and paint
  4. Drawing Canvas is the largest area of tux paint that is used to draw and paint.

## 7. Let's Use Paint

### Word Bank

Do yourself.

### Rapid Fire

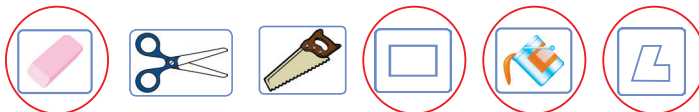
1. a. (ii)                      b. (ii)                      c. (ii)
2. a. Line shape                b. Fill with color tool                      c. Rectangle shape

### Evaluation Time

- a. 1. Tools group    2. Shapes group                      b. Line tool                      c. Fill with color tool

### Activity Time

Circle only the tools or shapes of Paint.



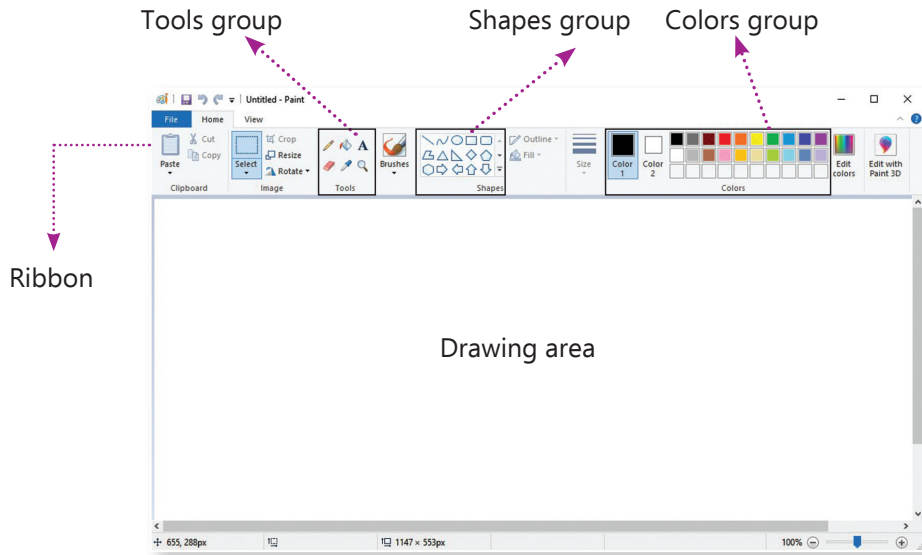


Do yourself.

## Periodic Assessment-4

(Based on chapters 7 & 8)

A.



- B. i. Tools group    ii. Shapes group    iii. Shapes group  
 C. 1. T                    2. F                    3. F

## Test Sheet-2

(Based on chapters 5 to 8)

1. a. (i)                    b. (ii)                    c. (ii)                    d. (iii)                    e. (iii)
2. a. eraser                    b. drawing canvas`                    c. shapes
3. a. 1. Click 2. Double-click                    b. 1. Ribbon 2. Tools group
4. a. Selector shows the different options for each tool you select, such as, different sizes and pencils when you select paint tool.
- b. To draw a rectangle follow these steps:
  - Step 1: Click on the Rectangle shape from the Shapes group.
  - Step 2: Select a colour from the Colors group.
  - Step 3: Click and drag the mouse to draw a rectangle in the drawing area.
  - Step 4: Release the mouse button gently.

