

Name:

Roll No:

Class: Section:

Date:

COMPUTER NETWORKING

Chapter-1

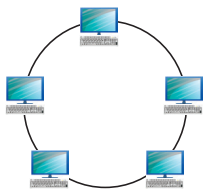
A. Circle the correct option.

1. The process of (connecting / separating) computers and peripheral devices with each other, so that they can exchange data is called computer networking.
2. A (server / client) is also called as host computer.
3. (LAN / WAN) is a digital communication system that interconnects a large number of computers and other peripheral devices within a radius of less than 1 km.
4. In (Ring / Star) topology, all the nodes are connected in a circular path.
5. (Protocol / Bluetooth) is a set of rules that governs the communication between the computers on a network.

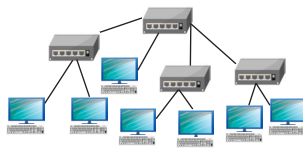
B. Complete the sentences.

1. Modem stands for MODULATOR
2. Networking cable is also known as
3. The computer which stores and provides the access to a database is called a
4. The computer which performs a specific task is called the
5. The total diameter of LAN is not more than

C. Name the type of topology used in below images:



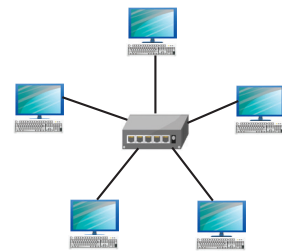
1.



2.



3.



4.