

ANSWER KEY

Touchpad PLUS Ver 1.0

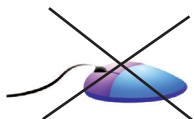
Class-3

1. The Computer System

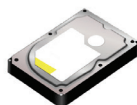
One Touch Learn 

- A.** 1. (b) 2. (b) 3. (c) 4. (a)
B. 1. micro 2. CPU 3. information 4. hard copy
C. 1. T 2. F 3. T 4. F 5. F

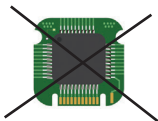
D. 1.



2.



3.



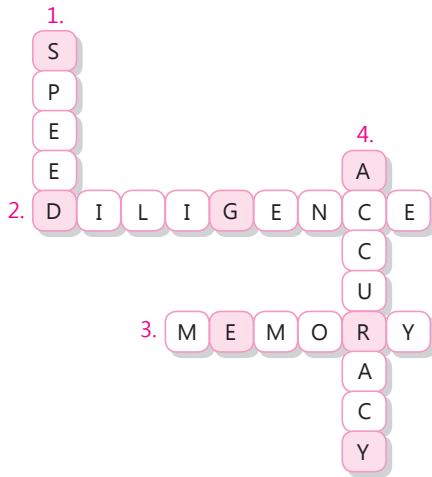
Let's Do It 

- A.** 1. The three parts of Central Processing Unit (CPU) are ALU, MU and CU.
2. Hard disk and pen drive are the two storage devices.
- B.** 1. The data or instructions we give to the computer are called input. The result of processing is called output.
2. The three features of a computer are:
(i) Speed (ii) Accuracy (iii) Diligence.

3. Supercomputers are the largest and fastest of all types of computers. They can process very large amount of data quickly.

Crack The Code

- A.** 1. Process 45
2. Input Output, 10
B. Process Input Output
C.



FUN in LAB

Do yourself.

2. Computer Software

One Touch Learn

- A.** 1. (c) 2. (c) 3. (c) 4. (a)
B. 1. two 2. software 3. System 4. Application 5. Operating
C. 1. c 2. d 3. a 4. b

- D.** 1. Paint MS Word Windows 10 Adobe Photoshop



2. Mouse

Scanner

Keyboard

Windows XP

3. Printer

Pen drive

Hard disk

Keyboard

Let's Do It



- A.**
1. Windows is an example of system software.
 2. Adobe Photoshop is used for creating and editing photos.
 3. Windows XP, Windows Vista, Windows 7, Windows 8 and Windows 10 are the different version of windows.
- B.**
1. Hardware are those parts of a computer that we can touch and see.
 2. A software is a set of instructions or programs that tells the computer hardware how to perform a task.
 3. Application software helps us to perform a specific type of job. For example, MS Word.

Crack The Code



- A. Hardware** Monitor Mouse CPU Scanner Printer Keyboard
- Software** MS Word MS Windows Paint Adobe Photoshop
- B.** 1. HARDWARE 2. SYSTEM SOFTWARE 3. POWERPOINT 4. WINDOWS 5. SCANNER

FUN in LAB



Do yourself.

Periodic Assessment-1

(Based on chapters 1 & 2)

- A.**
1. input
 2. Hard disk
 3. accurate
 4. MS PowerPoint
 5. controls
 6. Pendrive
 7. faster
 8. IPO
- B.**
1. Operating System
 2. Control Unit
 3. Supercomputer
 4. Adobe Photoshop
 5. Windows
 6. Computer
 7. CPU

3. Let's Know About Windows 7

One Touch Learn

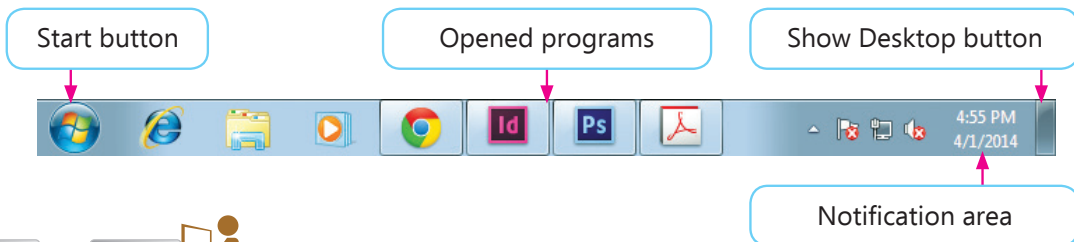
- A.** 1. (b) 2. (c) 3. (b) 4. (c) 5. (c)
B. 1. Microsoft 2. icons 3. desktop 4. I Beam
C. 1. d 2. c 3. b 4. a
D. 1. T 2. F 3. T

Let's Do It

- A.** 1. Windows 7 has a Graphical User Interface (GUI) that means we do not have to remember all the commands.
 2. Four-headed Arrow is used for moving pictures.
B. 2. Taskbar is a long bar at the bottom of the desktop. It has a Start button, a notification area, a clock and Show Desktop button.
 3. To shut down a computer, click on the start button, click on the shut down in the start menu.
C. Busy Double-headed arrow I-Beam Working in Background

Crack The Code

- A.** 1. COMPUTER SYSTEM 2. FOUR-HEADED ARROW 3. RECYCLE BIN 4. NETWORK
B.



Do yourself.

4. Introduction to MS Word 2010

One Touch Learn

- A.** 1. (c) 2. (c) 3. (a) 4. (c)
B. 1. F 2. F 3. T 4. T 5. T
C. 1. file tab 2. status bar 3. window control button 4. zoom slider



- A.**
1. MS Word is used to type letters, stories, reports, etc.
 2. Title bar, Ribbon and Status bar are the three types of MS Word window.
 3. Exit option is used to close the MS Word.
- B.**
1. To create a new file, follow the given steps:
Step 1 Click on File tab.
Step 2 Click on New option.
Step 3 Click on Blank document option from the Available Templates.
Step 4 Click on Create button.
 2. To open a saved document, follow these steps:
Step 1 Click on File tab.
Step 2 Click Open option.
Step 3 Find the file to be opened and click the Open button.
 3. To save the document, follow these steps:
Step 1 Click on File tab.
Step 2 Select Save or Save As option.
Step 3 Give the file a name in the File name box.
Step 4 Click the Save button



- A.** Ctrl + S Ctrl + O Ctrl + P Alt + F4 Ctrl + N
- B.** 1. Title bar 2. Title bar 3. Quick Access Toolbar 4. Status bar



Do yourself.

Periodic Assessment-2

(Based on chapters 3 & 4)

- A.** 1. easy 2. taskbar 3. vertical 4. print 5. groups 6. application
- B.**
1. to open a blank document
 2. to save a copy of a document
 3. to print a document
 4. to close the document
- C.** 1. Four headed arrow 2. Recycle Bin 3. Network

Test Sheet-1

(Based on chapters 1 to 4)

Section A

- A.** 1. (ii) 2. (i) 3. (i) 4. (iii)
B. 1. T 2. F 3. F 4. T 5. T

Section B

- A.** 1. Input devices are used to send input to a computer.
2. CPU is known as the brain of computer.
3. Icons are the small pictures which represents different programs on the desktop.
4. Desktop and laptop are microcomputers.
- B.** 1. Two features of Windows 7 are:
(i) Windows 7 has a Graphical User Interface (GUI) that means you do not have to remember all the commands.
(ii) It allows you to run several programs at the same time.
2. To create a new document, follow the given steps:
Step 1 Click on File tab.
Step 2 Click on New option.
Step 3 Click on Blank document option from the Available Templates.
Step 4 Click on Create button.

5. Fun with Paint



- A.** 1. (b) 2. (c) 3. (c) 4.(a) 5. (c)
B. 1. F 2. F 3. F 4. T 5. T
C. 1. Text tool 2. Fill with color tool 3. Rounded rectangle shape 4. Polygon shape
5. Oval shape 6. Brushes tool 7. Curve shape



- A.** 1. Paint program is used to draw and paint on a computer.
2. Polygon Shapes is used to draw a closed shape with straight lines.
3. Rotate command is used to change the position of the drawing at different angles.
- B.** 1. Copy/Paste gives the duplicate image of a drawing.
Whereas, Cut/Paste deletes the image from one place and pastes it to another place.



2. To flip an image, follow these steps:

Step 1 Click on Home tab.

Step 2 Click on Select and choose Rectangle Selection.

Step 3 Select the image by dragging the mouse over it.

Step 4 Click on Rotate. You will see two options to flip.

Step 5 Click on Flip horizontal or Flip vertical.

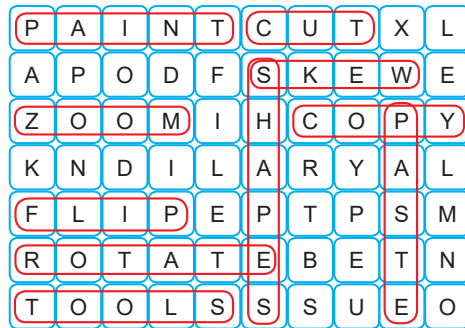
3. To open an old drawing, follow these steps:

Step 1 Click on Paint button

Step 2 Click Open command. The open dialog box appears.

Step 3 Select the file name that you want to open or type the file name in the File Name box.

Step 4 Click on Open button.



Do yourself.

6. Computer Language—MSW LOGO



- | | | | | | |
|-----------|-------------|----------|-----------|-------------|-----------|
| A. | 1. (b) | 2. (b) | 3. (b) | 4. (b) | |
| B. | 1. computer | 2. logic | 3. Status | 4. triangle | 5. turtle |
| C. | 1. F | 2. F | 3. T | | |



- A.**
1. MSW LOGO is a computer language which has been designed to teach the basics and logics of programming to the children.
 2. LOGO was developed by a group of experts headed by Seymour Papert of USA in the year 1967.
 3. LOGO's commands are typed in the commander window.
- B.** To exit MSW LOGO, follow these steps:
- Step 1** Click on File menu.
- Step 2** Click on Exit.



1. Commander Window
2. Bye
3. Execute button
4. Reset button
5. Logo

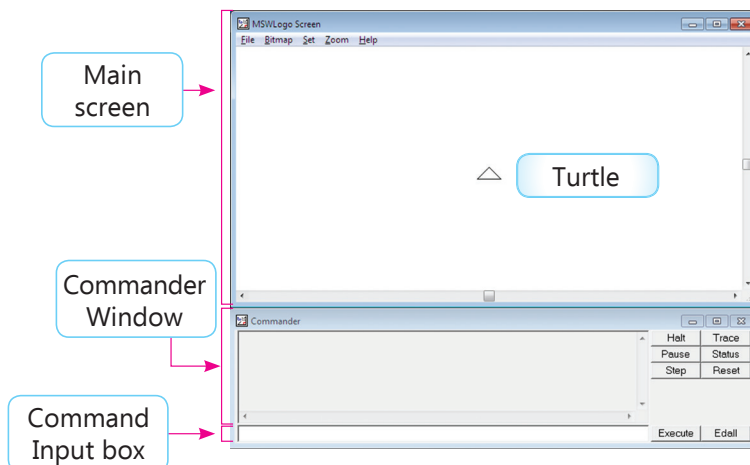


Do yourself.

Periodic Assessment-3

(Based on chapters 5 & 6)

- A.**
1. increase
 2. different
 3. Flip
 4. straight
 5. simple
 6. Curve
- B.**



7. LOGO Commands

One Touch Learn

- | | | | | | |
|-----------|--------------------|-----------|--------|--------|--------|
| A. | 1. (c) | 2. (a) | 3. (a) | 4. (a) | 5. (c) |
| B. | 1. LOGO Primitives | 2. RT, LT | 3. HT | | |
| | 4. FD 50 | 5. CT | | | |

Let's Do It

- A.**
1. Print command helps us to display messages.
 2. CT command is used to clear text from the command window.
- B.**
1. BACKWARD command is used for moving the turtle in the direction opposite to which it is pointing.
 2. LEFT command turns the head of the turtle towards the left side, i.e., in the anticlockwise direction.

Crack The Code

- | | | | | |
|-----------|----------|----------|----------|-----------|
| A. | 1. FD 20 | 2. BK 70 | 3. RT 60 | 4. LT 120 |
| B. | 1. FD | 2. BK | 4. RT | 5. LT |

FUN in LAB

Do yourself.

8. Fun with Tux Paint

One Touch Learn

- | | | | | | |
|-----------|---------|----------|-------------------|-----------|-----------|
| A. | 1. (a) | 2. (a) | 3. (b) | 4. (a) | 5. (b) |
| B. | 1. foam | 2. paint | 3. colors palette | 4. stamps | 5. mosaic |
| C. | 1. (i) | 2. (d) | 3. (a) | 4. (f) | 5. (g) |
| | 6. (h) | 7. (e) | 8. (b) | 9. (c) | |
| D. | 1. F | 2. T | 3. F | 4. T | 5. T |



- A.**
1. Smudge effect, Foam effect and Real Rainbow effect are the three Magic tools.
 2. Foam Effect is used to give a bubble effect in Tux Paint.
 3. Paint tool is used to draw freehand.
- B.**
1. This effect is used to fill colours in any closed shape. To use Fill Magic effect, follow these steps:
 - Step 1** Click on the Magic tool.
 - Step 2** Use the up and down arrow key in the Selector to find the Fill effect.
 - Step 3** Click on the Fill button.
 - Step 4** Select the colour from the Colors Palette.
 - Step 5** Bring the pointer inside the shape and click the mouse button.
 2. a. Undo tool is used to reverse the last drawing action.
b. Magic tool is used to apply various effects to a drawing.



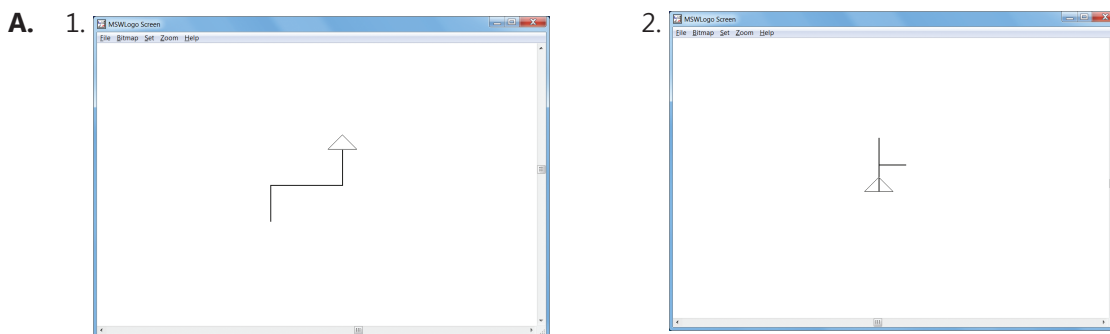
1. SMUDGE
2. MOSAIC
3. FOAM
4. REAL RAINBOW



Do yourself.

Periodic Assessment-4

(Based on chapters 7 & 8)



- B.**
1. (e)
 2. (c)
 3. (a)
 4. (b)
 5. (d)



Touchpad PLUS (Version 1.0)-III (Answer Key)



Test Sheet-2

(Based on chapters 5 to 8)

Section A

- A.** 1. (ii) 2. (i) 3. (iii) 4. (i)
- B.** 1. head 2. RT 3. LT 4. Selected

Section B

- A.** 1. BK 40 is used to move the turtle 40 steps backward in LOGO.
2. Rotate command in Paint is used to change the position of the drawing at different angles.
3. Language for Graphics Oriented
- B.** 1. Logo is used for:
 (i) Programming (ii) Logical reasoning (iii) generating basic shapes
2. Mosaic effect is to put pattern produced by arranging together small pieces of stones, tiles, glass etc.