

1. Know Your Computer

Checkpoint



- A.** 1. c 2. b 3. b
- B.** 1. T 2. F 3. T 4. T 5. T
- C.** 1. portable 2. decisions 3. feelings 4. speed
- D.** 1. Laptop, Desktop, Tablet (any three)
2. Desktop
3. Do sums, watch movies and listen to music. (any three)

Mind Boggler



- A.** 1. C 2. C 3. C 4. M 5. M 6. M
- B.** 1. LAPTOP 2. DESKTOP 3. SMARTPHONE 4. TABLET

2. Applications of a Computer

Checkpoint



- A.** 1. a 2. b 3. a
- B.** 1. games 2. bills 3. timetables 4. diseases 5. police
- C.** 1. b 2. c 3. a 4. e 5. d
- D.** 1. Schools, Hospitals (any two) 2. Prepare medical report (any one)

Mind Boggler



2. BANK 3. ATM 4. SHOP

Periodic Assessment-1

(Based on chapters 1 & 2)

- A.** 1. M 2. M 3. C 4. M 5. C
B. 1. Bank 2. Railway Station 3. Space Research Lab
4. Home 5. School 6. Hospital

3. Working of a Computer

Checkpoint



- A.** 1. b 2. c 3. a 4. b
B. 1. CPU 2. Monitor 3. Mouse and keyboard
C. 1. T 2. F 3. F 4. F
D. Input → Process
E. 1. A computer works on the Input-Process-Output cycle.
2. Mouse, Keyboard (any two)
3. Output is the result that we get after processing.
4. Working of the computer on Input is called Process, we get output after processing.

Mind Boggler



1. Output Input Process
2. Input Process Output

4. Computer Devices

Checkpoint



- A.** 1. b 2. b 3. c
B. 1. d 2. e 3. a 4. b 5. c
C. 1. F 2. T 3. F 4. F 5. T
D. 1. Mouse 2. Printer 3. DVD 4. CPU 5. Scanner
E. 1. Keyboard and Mouse (any two)
2. Monitor and Printer
3. CD, DVD and Pen drive



F.



Printer is an output device used to print the result of the work done by the computer on a paper.



Compact Disc is circular in shape. It is a portable storage device.



Headset is a combination of headphones and a microphone.

Mind Boggler



A.



B.

1. Mouse

2. Scanner

3. Microphone

4. Printer

5. Speakers

5. Keyboard and Mouse

Checkpoint



A.

1. a

2. a

3. a

4. b

5. b

B.

1. single

2. tab

3. double

4. Spacebar

5. right

C.

1. f

2. e

3. a

4. b

5. g

6. d

7. c

D.

1. Caps Lock

2. Tab



3. Drag means to move the mouse while keeping the mouse button pressed and move an item to another location on the computer.

4. Alphabet keys

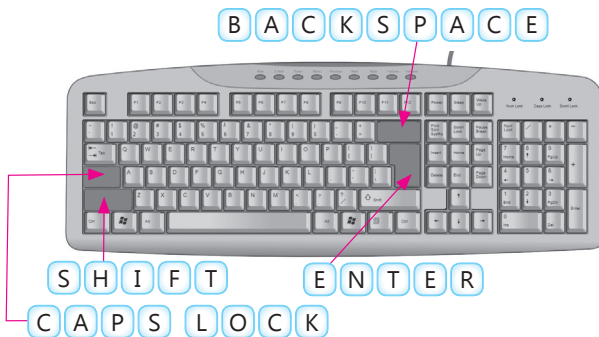
E. 1. Wireless Mouse 2. Optical Mouse

Mind Boggler



A. 1. Opens 2. Selects

B.



Periodic Assessment-2

(Based on chapters 3 to 5)

A. **Input** 1. Apples 2. Banana 3. Grapes 4. Knife 5. Salt

B. 1. I 2. O 3. S

C. 1. Wireless mouse

2. Shift key

3. Double-click

Test Sheet-1

(Based on chapters 1 to 5)

Section A

A. 1. (ii) 2. (i) 3. (ii)

B. 1. T 2. T 3. F 4. F

Section B

A. 1. DVD and CD (any two)

2. Inkjet Printer and Laser Printer

3. Monitor

4. Shift key and Tab key



- B.** 1. Computers are used in schools for : (any two)
 (a) Making timetables and report cards (b) Teaching students
2. Computers are used in police station for tracking the record of criminals.
3. Shift key is used with the other keys for different purposes. if you press and hold the shift key along with an Alphabet key, it will type that letter in capital even when the Caps Lock turned off.

6. Operating a Computer

Checkpoint



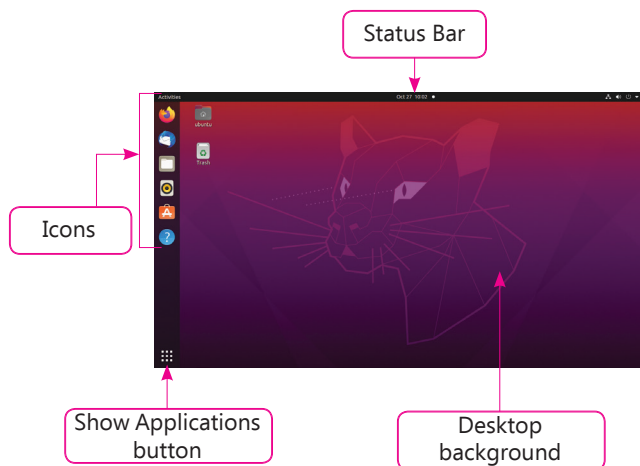
- A.** 1. a 2. b 3. a
- B.** 1. desktop 2. icons 3. control 4. power off
- C.** 1. T 2. T 3. F 4. F
- D.** 1. d 2. c 3. a 4. b
- E.** 1. Trash (any one)
 2. Show Applications
 3. The first screen that appears on the monitor is called the desktop.

Mind Boggler



- A.** 3 Switch on the CPU.
 4 Switch on the monitor.
 1 Turn on the power switch.
 2 Switch on the UPS.

B.



7. Tux Typing & Tux of Maths

Checkpoint



- A.** 1. b 2. c 3. a
- B.** 1. Tux Typing 2. Tux of Math
- C.** 1. penguin 2. letters 3. Tux Math 4. Quit
- D.** 1. Typing with all 10 fingers is known as touch-typing.
2. In Comet Zap, comets come from space and can hit area or city where Tux is guarding. Pressing the letters that appear on the comets tells Tux which one he should hit with its laser beam.
3. Tux of Math Command (Tux Math, for short) is an open source arcade-style video game for learning arithmetic, initially created for Linux.
4. To open Tux Math, follow these steps:
Step 1 Click on the Show Application button.
Step 2 Type Tux in the Search box.
Step 3 Click on Tux on Math.

Mind Boggler



- a. Characters b. Character Per Minute c. Words Per Minute

8. Fun with Tux Paint

Checkpoint



- A.** 1. b 2. c 3. a
- B.** 1. c 2. d 3. a 4. b
- C.** 1. text 2. magic 3. new 4. open
- D.** 1. Stamp tool.
2. Magic tool is used to add special effects to the drawing.
3. Open tool is used to open the existing drawing in Tux Paint.
4. Text tool is used to type text. We can type any text of our choice like name, caption, etc.

Mind Boggler



Magic tool: Flower effect, Grass effect, Fill effect



Periodic Assessment-3

(Based on chapters 6 to 8)

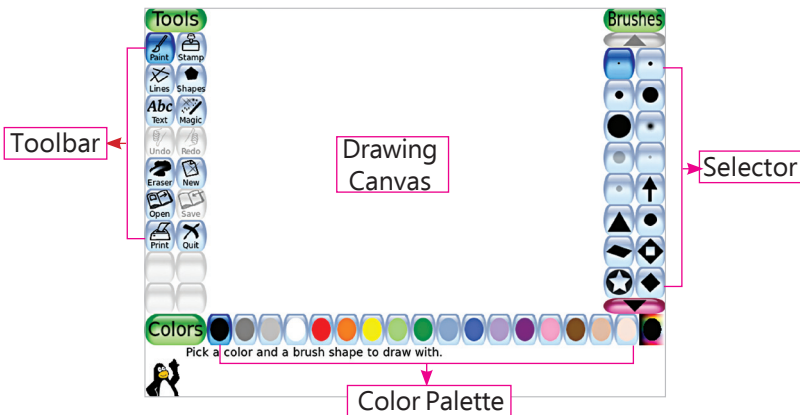
A. Icons, Launcher

B. 1. Characters

2. Characters per minute

3. Words per minute

C.



9. Reasoning and Analysis

Checkpoint



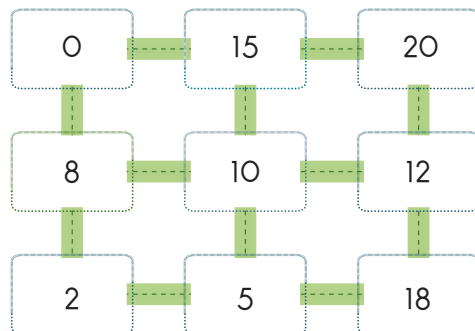
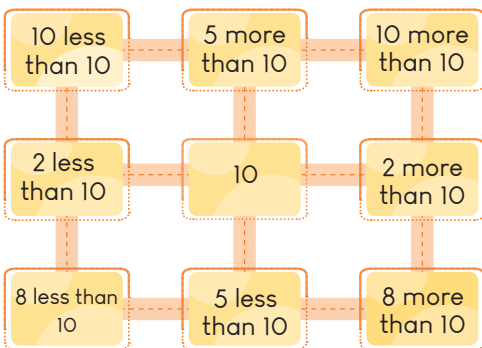
A. 1. c

2. c

Mind Boggler



B.



C.



10. Artificial Intelligence Around Us

Checkpoint

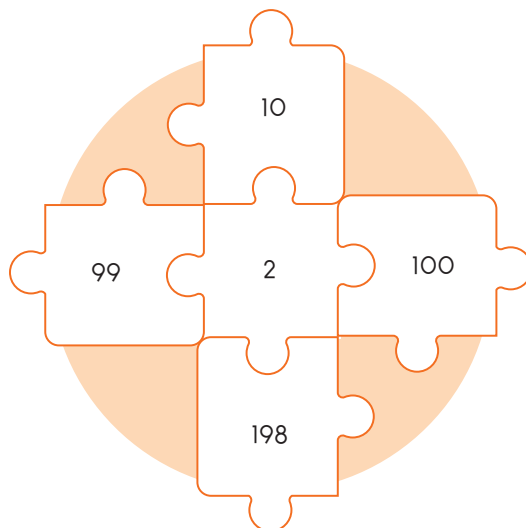
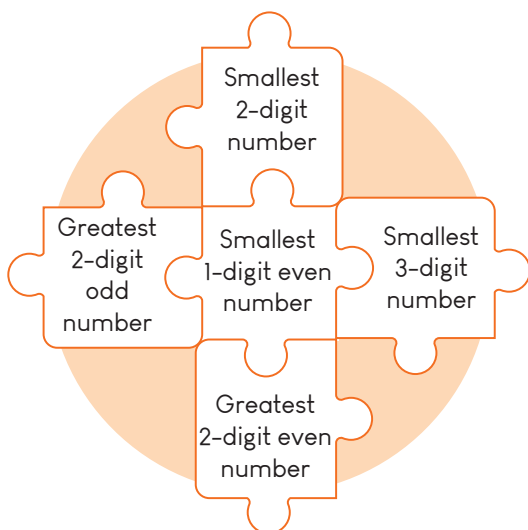


- A. 1. a 2. c 3. a
- B. 1. Understand 2. Recognise 3. Voice assistant 4. Face 5. Easier

Periodic Assessment-4

(Based on chapters 9 & 10)

A.



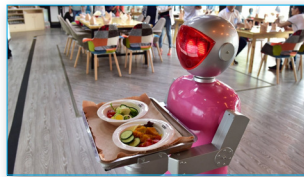
B.

1.



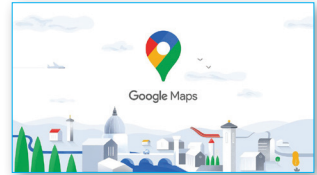
SIRI

2.



ROBOT

3.



GOOGLE

Test Sheet-2

(Based on chapters 6 to 10)

Section A

A. 1. (iii) 2. (iii) 3. (iii) 4. (iii) 5. (i)

B. 1. Power 2. Voice Assistant 3. Canvas 4. Face 5. Crop

C. 1. North & South (any two)
2. Tux of Math Command (Tux Math, for short) is an open source arcade-style video game for learning arithmetic, initially created for Linux.
3. Stamp tool can be used to insert different stamps/images from the Selector.