

# Worksheet

1

Name: .....

Roll No: ..... Class: ..... Section: .....

Date: .....

## COMPUTER NETWORKING

### Chapter-2

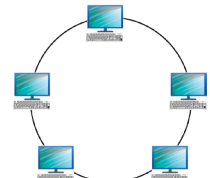
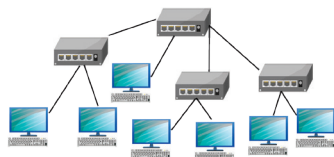
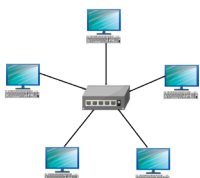
#### A. Circle the correct option.

1. The process of (connecting / separating) computers and peripheral devices with each other, so that they can exchange data is called computer networking.
2. A (server / client) is also called host computer.
3. (LAN / WAN) is a digital communication system that interconnects a larger number of computers and other peripheral devices within a radius of less than 1 km.
4. In (Ring / Star) topology, all the nodes are connected in a circular path.
5. (Protocol / Bluetooth) is a set of rules that governs the communication between the computers on a network.

#### B. Complete the sentences.

1. Modem stands for MODULATOR .....
2. Networking cable is also known as .....
3. The computer which performs a specific task is called the .....
4. The total diameter of LAN is not more than .....

#### C. Name the type of topology used in below images:



.....

.....

.....

.....