

1. Discover Computers



1. MAINFRAME COMPUTER
2. SUPERCOMPUTER
3. MICROCOMPUTER
4. MINICOMPUTER

Rapid Fire

1. 1. Minicomputer
2. Microcomputer
3. Microcomputer
2. a. (iii) b. (iv) c. (i) d. (ii)

Evaluation Time

1. a. Supercomputer b. Mainframe c. Parallel
2. a. A microcomputer is a single-user computer, whereas a minicomputer is a multi-user computer.
b. Microcomputer → Minicomputer → Mainframe Computer → Supercomputer
c. Mainframe computers are large computers. They are faster and have greater memory space than minicomputers.
3. a. Minicomputer
b. Smartphone (a type of microcomputer)

Activity Time

- A. a. 19,713 b. 6,957 c. 448
d. 520 e. 11



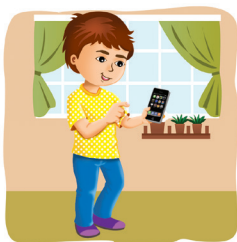
[illegible]

Do it yourself.

2. Hardware and Software



1. Inkjet Printer
2. Speakers
3. Headphones
4. Web Camera



Dialing number of your friend

Input



Connecting to network

Process

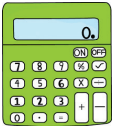



Talking to your friend

Output





Machine	Input	Process	Output
 Calculator	Pressing Numbers and Symbols	Calculation is being done	Calculated Answer
 Washing machine	Dirty Clothes	Washing Clothes	Clean Clothes

Rapid Fire

- a. (i) b. (ii) c. (ii) d. (i)
- a. Mouse b. Joystick c. Web Camera

Evaluation Time

- a. Devices b. Joystick c. Speakers d. Operating System e. ALU
- a. The parts of a computer that we can see and touch are called Hardware.
b. CPU is also called the "brain" of a computer as it is responsible for all the work done.
c. The output which is displayed on the screen of a monitor is called the soft copy. A printout of the soft copy on paper is called the hard copy of the output.
d. Printer is an output device. It is used to print the result of work done by the computer on paper. The different types of printer are Laser printer and Inkjet printer.
- a. Headphones
b. Printer

Activity Time

- Printer
- Application
- Software
- Keyboard



In The Lab

Do it yourself.



Periodic Assessment 1

(Based on chapters 1 & 2)

- A.** 1. Mouse 2. Keyboard 3. Light Pen 4. CPU 5. Monitor
6. Headphones 7. Projector
- B.** 1. Touchscreen 2. Pen drive 3. Smart Board 4. Monitor
5. Joystick 6. Printer 7. Compact Disc 8. Web Camera
- C.** 1. T 2. T 3. F 4. F

3. Exploring the World of Windows 10



1. Desktop 2. Icon 3. Start Button 4. Start Menu

Rapid Fire

1. a. (i) b. (i) c. (iii) d. (iii)
2. a. F b. F c. F d. T

Evaluation Time

1. a. Windows 10 b. Minimize c. Task View d. Desktop
2. a. Notification Area shows different types of notifications for your computer such as, your Internet connection, or the volume level.
b. The three window control buttons are the Minimize, Maximize, and Close buttons.
c. An icon is a picture or graphic representation of an application or a file.
d. The Maximize button is used to enlarge the window to its full screen size.
3. a. To organise the icons on your desktop, you can use the "Sort by" option.
b. Simran should press the Task View button or Windows key + Tab to view all open windows at once.

Activity Time

- a. TASKBAR b. DESKTOP
c. BACKGROUND d. ICONS





Do it yourself.

4. Fun with Paint



1. Pencil tool
2. Eraser tool
3. Fill with color tool
4. Text tool

Rapid Fire

1. a. (ii) b. (iii) c. (iii) d. (i)
2. a. ii b. i c. iv d. iii

Evaluation Time

1. a. Select command is used to select a drawing or a part of a drawing.
b. Crop command is used to clear everything outside the selected area.
c. Rotate command is used to change the position of the drawing at different angles.
d. Skew command is used to stretch the image from one end while other end remains fixed.
2. a. Copy and paste command is used to make a duplicate image of drawing on another place. Whereas, Cut and Paste command is used to delete the image from its original place and paste it to another place.
b. To resize an image, follow these steps:
Step 1: Click on Home tab.
Step 2: Click on Select command.
Step 3: Select the image by dragging the mouse over it.
Step 4: Click on Resize command.
Step 5: Select the Maintain aspect ratio check box.
Step 6: Enter the Horizontal value (width) or Vertical value (height).
Step 7: Click OK.
c. Rectangular selection is used to select the drawing in rectangular form as per need. Free-Form selection is used to select the drawing in free form as per need.
d. To save a file in JPEG formats, follow these steps:
Step 1: Click on File tab.



Step 2: Click on Save as option.

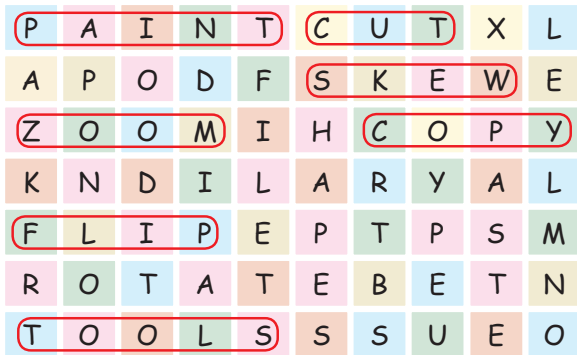
Step 3: Select the required format.

Step 4: In the File name: box, type the file name.

Step 5: Click on the Save button.

3. a. Reena should use the Cloud Callout in MS Paint to add a callout shape above the girl to show her thoughts.
- b. You can use the Eraser tool to erase the extra rays.

Activity Time



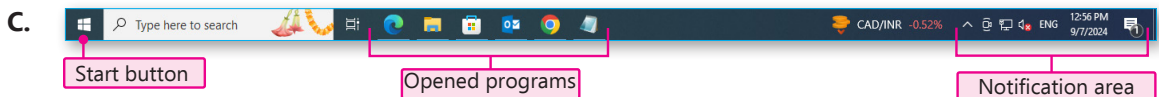
In The Lab

Do it yourself.

Periodic Assessment 2

(Based on chapters 3 & 4)

- A. 1. Notification Area 2. Window Control Buttons
3. Folder 4. Color picker tool
5. Pencil Tool 6. Brush Tool
- B. 1. ii 2. v 3. iv 4. iii 5. i



- D. Aryan will choose the Resize option to change the size of the drawing.



Test Sheet 1

(Based on chapters 1 to 4)

Section A

- A.** 1. (ii) 2. (i) 3. (iii) 4. (ii) 5. (iii)
6. (ii) 7. (ii) 8. (iii)
- B.** 1. Black 2. ALU 3. Storage
4. Restore 5. Desktop
- C.** 1. F 2. T 3. T 4. F 5. T
- D.** 1. b. 2. d. 3. e. 4. c. 5. a.

Section B

- A.** 1. Windows 11 2. 1. Rotate right 90°, 2. Rotate left 90°, 3. Rotate 180°
3. Icon 4. Plotter
5. Public place
- B.** 1. To skew an image, follow these steps:
Step 1: Click on Home tab.
Step 2: Click on Select command.
Step 3: Select the image by dragging the mouse over it.
Step 4: Click on Resize command.
Step 5: In the Skew section, enter the value between 0 and 89 either in the Horizontal or Vertical boxes.
Step 6: Click OK.
2. A projector projects or displays data of computer screen on a large screen or surface for audience.
3. Notification Area shows different types of notifications for your computer such as, your Internet connection, or the volume level.
4. The software that are designed to perform some specific type of jobs on a computer are called Application Software.



5. Introduction to Word 2016



1. L

2. C

3. R

Rapid Fire

1. a. (iii) b. (i) c. (ii) d. (iii)
2. a. iii. b. i. c. iv. d. ii.

Evaluation Time

1. a. Ribbon b. Vertical c. Font d. Left
2. a. Two uses of Word are:
 - Type letters, stories and reports, quickly and easily.
 - Add pictures to your documents, stories and poem.
- b. The position of the text or the way the text appears with respect to the margins in a document is called alignment. There are four alignment options available in Word. They are: left, right, center and justify.
- c. To create a new document, follow these steps:
 - Step 1:** Click on File tab.
 - Step 2:** Select New option from the left pane.
 - Step 3:** Click on the Blank document option in the right pane.
- d. To apply an artistic border, follow these steps:
 - Step 1:** Select the text.
 - Step 2:** Click on Home tab.
 - Step 3:** Click on the drop-down arrow on the Border option in Paragraph group.
 - Step 4:** Click on Page Border tab in the Borders and Shading dialog box.
 - Step 5:** Click on the drop-down arrow below the Art box.
3. a. The main area where Harmeet can type is called the Document Area.
- b. Nitin should press the Enter key to begin a new line and start a new paragraph.

Activity Time

- a. CTRL + N b. CTRL + S
- c. CTRL + O d. CTRL + W





Do it yourself.

6. Stepwise Thinking



Do it yourself.



1. a.

2. a.

Rapid Fire

- | | | | | | |
|----|----------|--------|---------|----------|------|
| 1. | a. (iii) | b. (i) | c. (ii) | d. (iii) | |
| 2. | a. F | b. F | c. F | d. F | e. T |

Evaluation Time

- The process of completing one step and going onto the other is known as stepwise thinking.
 - Reasoning is the process of thinking about the task in a logical or sensible way. It helps you to choose a correct option in the available options.

Problem Solving is the process of finding solutions to a difficult task.

- Two children playing on seesaw is an example of loop in real life.
- Steps to Make strawberry milkshake are:

Step 1: Collect fresh strawberries, milk, sugar, and ice cubes.

Step 2: Cut the strawberries into small pieces.

Step 3: Blend the Milkshake

- Step 3a:** Put the strawberries into a blender.
- Step 3b:** Add milk, sugar, and ice cubes.
- Step 3c:** Blend everything until smooth and creamy.

Step 4: Serve and enjoy!



Activity Time

- a.
- Step 1:** Date and time
Step 2: invitations
Step 3: friends
Step 4: activities
Step 5: snacks, refreshments
Step 6: Greet
Step 7: Enjoy



In The Lab

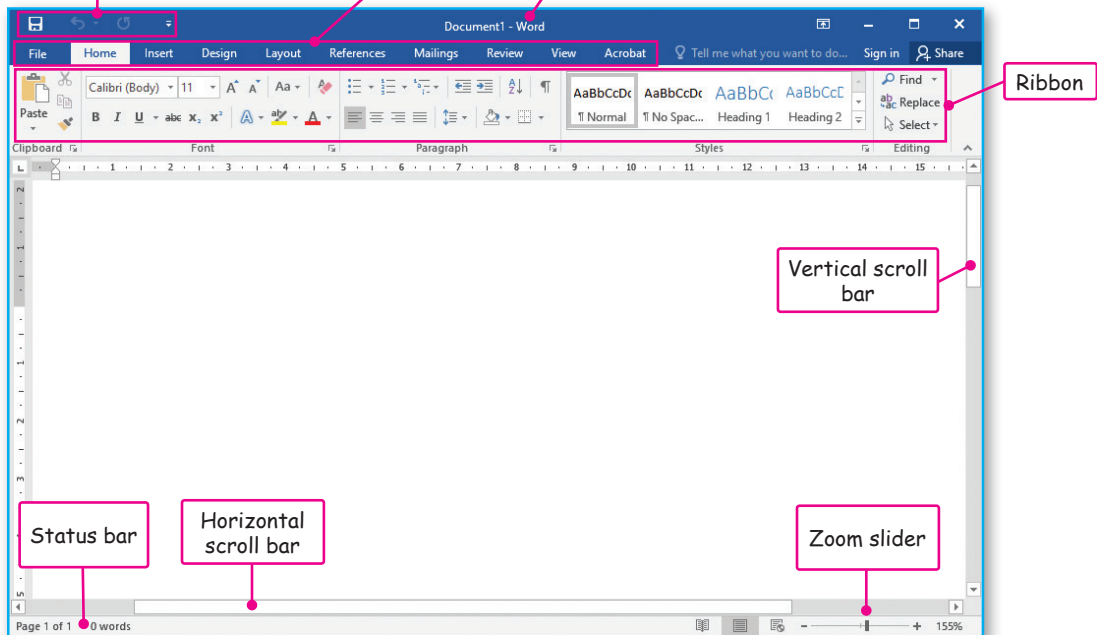
Do it yourself.

Periodic Assessment 3

(Based on chapters 5 & 6)

A. Yes

B. Quick Access Toolbar Tabs Title bar



- C. 1. Ramya will use Paragraph group and Borders and Shading option to use different colours, border and style.
2. Steps to Tie Shoelaces are:
- Step 1:** Take one lace and fold it to form a small loop.
- Step 2:** Take the other lace and fold it to form another small loop.
- Step 3:** Cross both loops over each other to form an "X."
- Step 4:** Take one loop and push it through the small hole created by the cross.
- Step 5:** Hold both loops and pull them tightly to secure the knot. Adjust the loops to make them even.

7. Let's Learn Scratch



1. Go button

2. Stop button

3. Events block



1. b.

2. a.

Rapid Fire

1. a. (iii) b. (ii) c. (i) d. (iii)
2. a. F b. T c. T d. F e. F

Evaluation Time

1. a. i. b. iv. c. v. d. ii. e. iii.
2. a. In Sounds tab is used to add and make changes in the sounds of the sprite and backdrop.
- b. Raghav should place the blocks in the Scripts Area in Scratch to create a script for his sprite.
- c. To add a sprite, follow the given steps:
Step 1: Click on the Choose a Sprite option.
Step 2: Click on a sprite to add it to your project.
- d. To save a project, follow the given steps:
Step 1: Click on File tab.
Step 2: Select Save to your computer option.
Step 3: Open the location where you want to save the project.



Step 4: Type the name in the File name box.

Step 5: Click on Save button.

3. a. To change the backdrop, follow the given steps:

Step 1: Click on the Choose a Backdrop option.

Step 2: Click on a backdrop to add it to your project.

- b. To open an existing project, follow the given steps:

Step 1: Click on File tab.

Step 2: Select Load from your computer option.

Step 3: Browse to the location of your project and select the project.

Step 4: Click Open button to open the project.

Activity Time

- a. Category: Looks block

Use: The Looks block is used to add speech and thought bubbles to a sprite.

- b. Category: Motion Blocks

Use: Motion blocks are used to control the movement of a sprite.

- c. Category: Event Block

Use: It is used to run the script on the stage, as it controls the starting of scripts.



In The Lab

Do it yourself.

8. Internet



1. Internet

2. Home Page

3. WWW

Rapid Fire

- | | | | | |
|----|----------|---------|----------|--------|
| 1. | a. (iii) | b. (ii) | c. (iii) | d. (i) |
| 2. | a. F | b. T | c. F | d. F |



Evaluation Time

1. a. Internet b. URL c. Website d. World Wide Web
e. Web Browser
2. a. Internet is a network of many computers across the world.
Uses of Internets are:
 1. search information on any topic 2. send and receive e-mail messages
- b. Internet affects focus and patience.
- c. A website is a collection of related web pages that provide information about a topic.
- d. World Wide Web (WWW) is the largest collection of information in the form of websites on the Internet.
- e. Every website on Internet has a unique address. This address of a website is called as Uniform Resource Locator or URL.
3. a. Web browser
b. You can enter the URL in the Address Bar of your web browser.

Activity Time

A	U	V	J	A	G	R	J	K	P
A	D	I	N	T	E	R	N	E	T
P	O	E	D	G	E	W	W	N	O
B	R	O	W	S	E	R	Y	P	T
A	V	D	B	C	X	Z	F	P	T
W	E	B	S	I	T	E	K	Q	E
F	N	I	I	K	L	I	O	I	R
C	M	O	D	E	M	T	E	O	L
E	W	E	B	P	A	G	E	E	I
A	D	D	R	E	S	S	B	A	R

Find Out

Do it yourself.



In The Lab

Do it yourself.

9. AI-Enabled Devices



1. a. Smart Doorbells
c. Chatbot
2. Smart Doorbells
3. Yes
- b. Smart TVs
- d. Smartwatches

Rapid Fire

1. a. (ii) b. (iii) c. (iii) d. (ii)
2. a. Self-driving b. Chatbot
c. Speakers d. Smartphones

Evaluation Time

1. a. A Smart TV is an AI-enabled device that offers internet connectivity, allowing users to stream music, movies, and games. It also features voice control, enabling users to navigate and select content with just their voice.
b. Parth's brother is likely referring to Facial Recognition, a popular AI-powered feature used for biometric authentication in smartphones.
c. Smartwatches differ from traditional watches with added features. They can monitor health, track fitness, connect to smartphones, and offer interactive interfaces.
2. a. Nitin is likely talking about a Smartwatch.
b. Ravi's device is likely a Smart Speaker.

Activity Time

- a. iii. b. v. c. iv. d. i. e. ii.

Find Out

Do it yourself.



In The Lab

Do it yourself.



Periodic Assessment 4

(Based on chapters 7 to 9)

- A.** 1. (i) 2. (iv) 3. (ii) 4. (iii)
- B.** 1. Smart Speakers 2. Chatbot 3. URL
4. Go button 5. Flipkart 6. Internet
- C.** Supriti can use Microsoft Edge or Mozilla Firefox to search information on the Internet.

Test Sheet 2

(Based on chapters 5 to 9)

Section A

- A.** 1. (iii) 2. (iii) 3. (iii) 4. (i) 5. (iii)
6. (ii) 7. (iii) 8. (i)
- B.** 1. Internet 2. URL 3. Website 4. World Wide Web
5. Web Browsers
- C.** 1. F 2. T 3. F 4. F
- D.** 1. i. 2. iv. 3. v. 4. ii. 5. iii.

Section B

- A.** 1. A website is a collection of related web pages that provide information about a topic.
2. World Wide Web (WWW) is the largest collection of information in the form of websites on the Internet.
3. A Smart TV is an AI-enabled device that offers internet connectivity, allowing users to stream music, movies, and games. It also features voice control, enabling users to navigate and select content with just their voice.
4. Sounds tab is used to add and make changes in the sounds of the sprite and backdrop.
5. Every website on Internet has a unique address. This address of a website is called as Uniform Resource Locator or URL.
6. Two children playing on seesaw is an example of loop in real life.
7. Two uses of Word 2016 are:
 - Type letters, stories and reports, quickly and easily.
 - Add pictures to your documents, stories and poem.



- B.** 1. Internet is a network of many computers across the world.
Uses of Internets are:
- search information on any topic
 - send and receive e-mail messages
2. Smartwatches differ from traditional watches with added features. They can monitor health, track fitness, connect to smartphones, and offer interactive interfaces.
3. To add a sprite, follow the given steps:
- Step 1: Click on the Choose a Sprite option.
- Step 2: Click on a sprite to add it to your project.
4. To save a project, follow the given steps:
- Step 1: Click on File tab.
- Step 2: Select Save to your computer option.
- Step 3: Open the location where you want to save the project.
- Step 4: Type the name in the File name box.
- Step 5: Click on Save button.
5. Raghav should place the blocks in the Scripts Area in Scratch to create a script for his sprite.
6. To create a new document, follow these steps:
- Step 1: Click on File tab.
- Step 2: Select New option from the left pane.
- Step 3: Click on the Blank document option in the right pane.
7. Steps to Make strawberry milkshake are:
- Step 1: Collect fresh strawberries, milk, sugar, and ice cubes.
- Step 2: Cut the strawberries into small pieces.
- Step 3: Blend the Milkshake
- Step 3a: Put the strawberries into a blender.
 - Step 3b: Add milk, sugar, and ice cubes.
 - Step 3c: Blend everything until smooth and creamy.
- Step 4: Serve and enjoy!

