

GIMP



BRIDGE COURSE

TOPICS COVERED

95%

- Features of GIMP
- Components of GIMP Window
- Opening an Image for Editing
- Starting GIMP
- Creating a New File
- Saving a File

GIMP is a free and open-source graphics editor software used for image retouching and editing, free-form drawing, cropping, converting between different image formats and more. GIMP is an acronym for **GNU Image Manipulation Program**. To download the GIMP software, type the URL: <https://www.gimp.org/downloads/> in the address bar and press Enter key.

FEATURES OF GIMP

Following are the features of GIMP:

- ★ User-friendly interface
- ★ Image manipulation can be done quickly
- ★ Powerful tools are used to change the colour of an image by adjusting brightness, contrast, colour balance, hue saturation levels, etc.
- ★ Create graphics for web applications with reduced file size, thus helping to load websites faster
- ★ Layer effect preserves the original state of the image
- ★ Support for a wide range of file formats, including GIF, JPEG, PNG, XPM, TIFF, TGA, MPEG, PS, PDF, PCX, BMP and more

Clickipedia

The initial version of GIMP was developed by Peter Mattis and Spencer Kimball. Specifically, GIMP version 0.54 was launched in 1996, while GIMP 1.0 followed in 1998. The latest version of GIMP is 2.10.38, released in May 2024.

STARTING GIMP

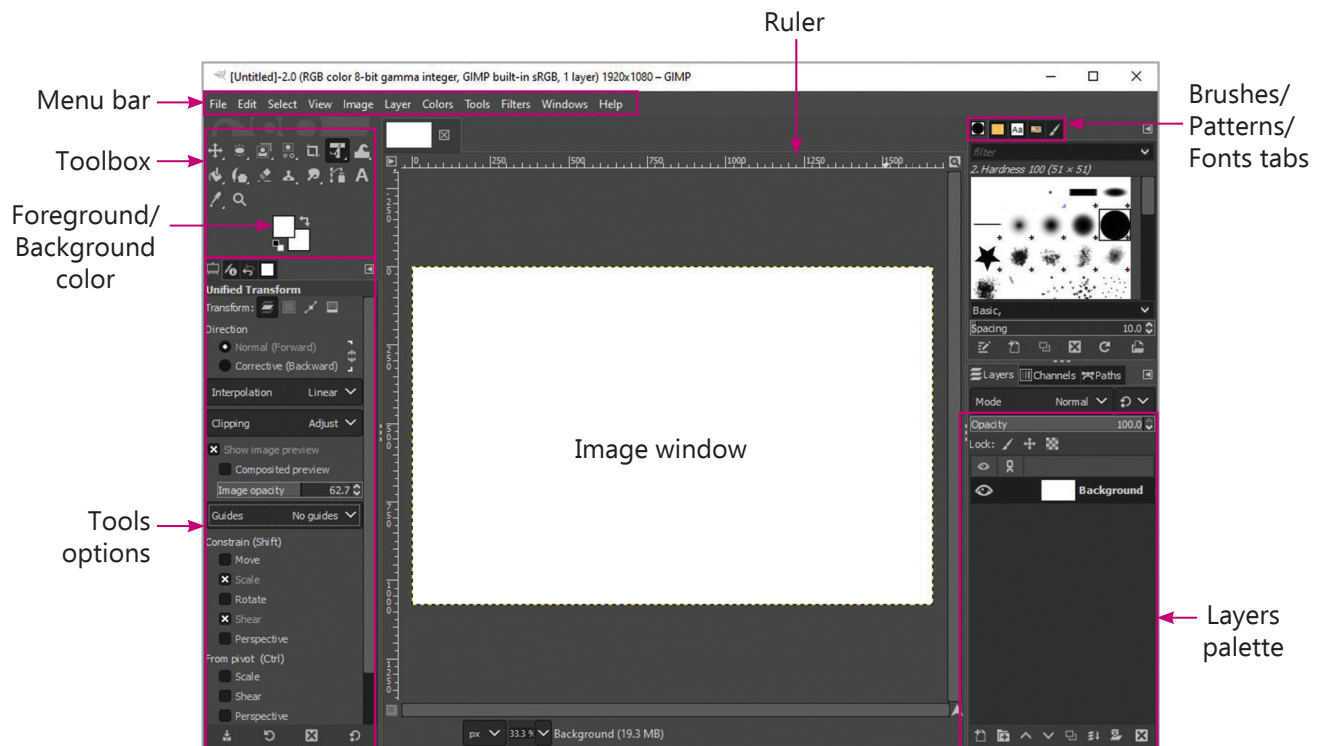
To start GIMP, click on **Start Button** → **Scroll to find letter G** → Click on **GIMP 2.10.38**.

You can also double-click on GIMP icon on the desktop to start GIMP.

COMPONENTS OF GIMP WINDOW

Now, learn the various components of GIMP window.

- ★ **Menu bar:** It contains different menus such as File, Edit, Select, Image, etc. for doing various tasks.
- ★ **Workspace:** The Workspace is the main area where you create, edit, and manipulate images.
- ★ **Toolbox:** It contains various tools that are used to create, edit and enhance an image.



Components of The GIMP main window

- ★ **Foreground/Background colors:** The color areas show GIMP's current foreground and background colours. Clicking on either one of them will open a color selector dialog box that allows changing to a different color. Clicking on the **double-headed arrow** exchanges the two colors, and clicking on the **small symbol in the lower left corner** resets them to black and white.
- ★ **Tool options:** This shows options for the currently selected tool.
- ★ **Image window:** Each image in GIMP is displayed in a separate window. Many images can be opened at the same time
- ★ **Ruler:** Rulers are shown above and to the left of the image, indicating coordinates within the image.
- ★ **Layers palette:** It is used to set order of visibility of the objects.

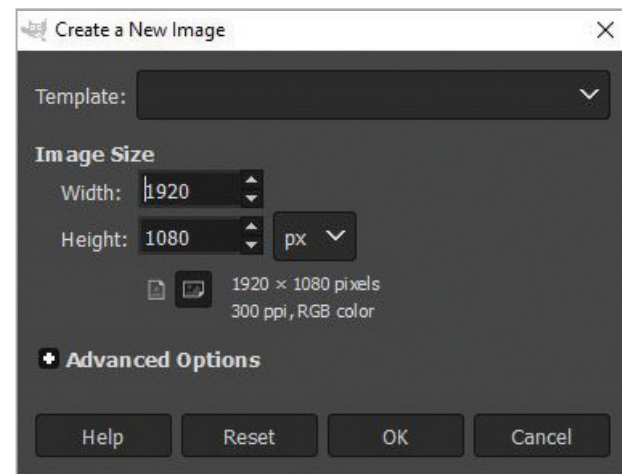
- ★ **Brushes/Patterns/Fonts tab:** This contains tabs that show the options for managing brushes, patterns and fonts. The Brushes dialog allows you to choose a brush to use with painting tools. **Patterns** tab is used in filling selected areas of an image. **Fonts** tab is used for Text tool whenever there is a requirement of change in font.

CREATING A NEW FILE

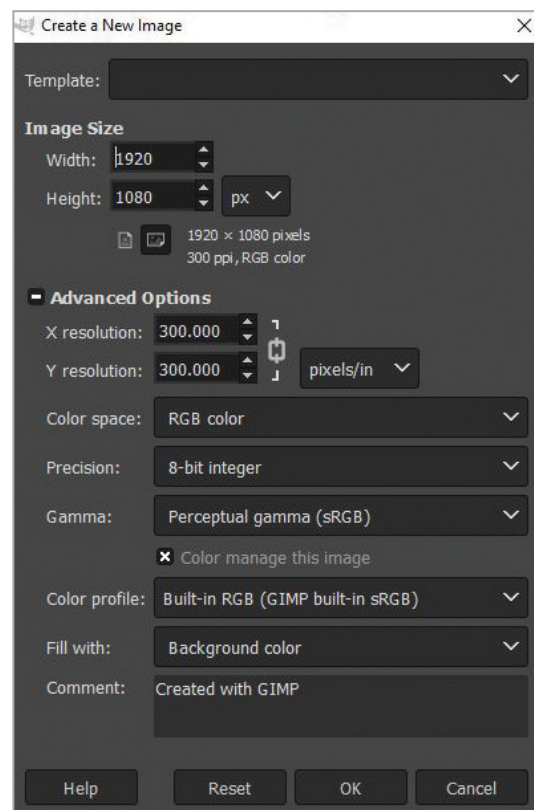
To create a new file press Ctrl + N from the keyboard or, click on the **File** → **New** option from the Menu bar. This will open the **New Image** dialog box with the following options:

- ★ **Template:** It represents image types that are commonly useful. The template sets values for the size, resolution, comments, etc.
- ★ **Image Size:** It specifies the width and height of the new image in pixels, centimeters, inches, points, millimetres, etc.
- ★ **Portrait/Landscape button:** It toggles between Portrait and Landscape mode. This exchanges the values for Width and Height.

When you click on **Advanced Options**, **Create a New Image** dialog box appears with some more options:



New document dialog box



Exploring advanced options in GIMP's new document dialog box

- ★ **X and Y resolution:** The values in the X resolution and Y resolution fields relate mainly to printing. They usually determine physical size of the image when it is printed.
- ★ **Colorspace:** You can create the new image in different color modes (RGB or Grayscale).
- ★ **Fill with:** Selects the initial background color of the new image.

Clickipedia

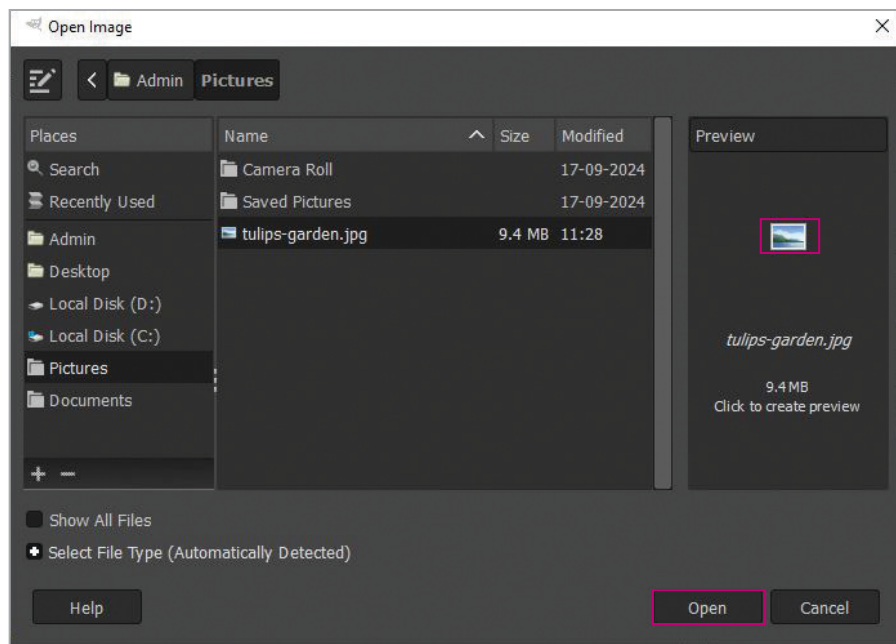
RGB Color mode defines colours in terms of Red, Green and Blue. CMYK Color mode defines colors in terms of Cyan, Magenta, Yellow and Black.

OPENING AN IMAGE FOR EDITING

To open an image press Ctrl + O from the keyboard or, follow the given steps:

- Step 1** Click on the **File** menu.
- Step 2** Click on the **Open** option.
- Step 3** Choose the image to be inserted.
- Step 4** Click on the **Open** button.

The image will appear on the workspace area. Now, you can use GIMP tools to edit the image.



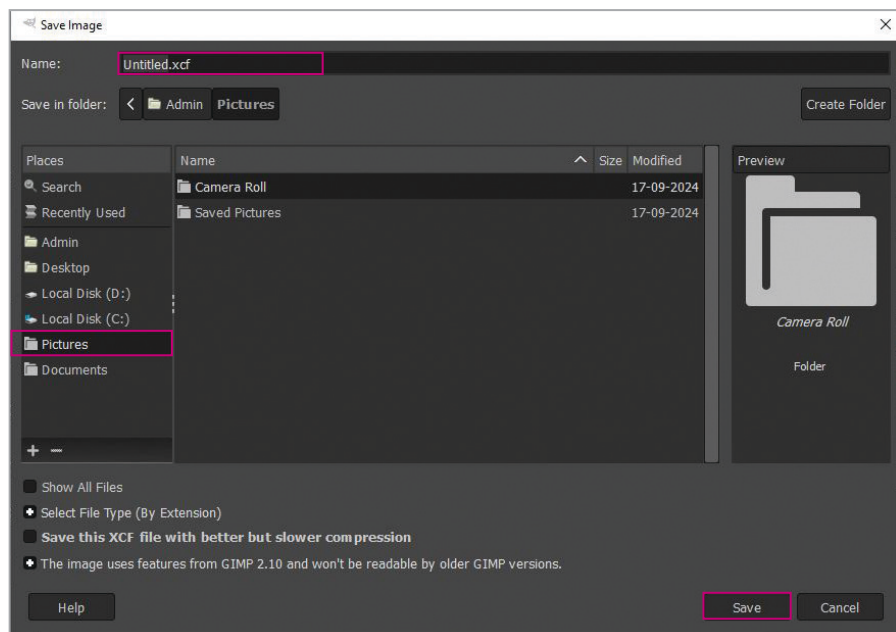
Open Image dialog box

SAVING A FILE

To save a file press Ctrl + S from the keyboard or, follow the given steps:

- Step 1** Click on **File** menu.
- Step 2** Click on **Save** option.
- Step 3** Navigate the folder to save the file.
- Step 4** Give the name of the file in the **Name:** box.
- Step 5** Click on Save button.

You can add an extension .png or .jpg to the file name while GIMP adds an extension .xcf by default to the saved file.



Save Image dialog box