

Krita



BRIDGE COURSE

TOPICS COVERED

95%

- Features of Krita
- Starting Krita
- Creating Graphics and Shapes
- Closing Krita Files
- Downloading and Installing Krita
- Components of the Krita Window
- Opening Krita Files

Krita is among the best free graphic design software available, offering a wide range of tools and features. This program has a painter-friendly interface, and tools are easily accessible. Additionally, Krita allows digital artists to customise and arrange the elements of the workspace in a flexible manner, much like connecting Lego blocks.



FEATURES OF KRITA

Krita offers many innovative features to make drawing more fun and productive. It provides various features, some of them are discussed below.

- **User Interface** – An intuitive user interface in which the dockers and panels can be moved and customised for your specific workflow. It also allows us to create our own shortcuts for commonly used tools.
- **Pop-up Palette** – It allows us to quickly pick colours and brush by right-clicking on the canvas.
- **Brush Stabilizers** – It lets us add a stabilizer to our brush to smoothen brush strokes if we have shaky hands while we draw.
- **Brush Engines** – It provides us with 9 unique brush engines. Each engine has a large number of settings to customise our brush strokes.



INFO MAIL

Subject: Krita's Achievement

Krita has been awarded with the "Best Free Graphics Editor" prize by the Technology of the Year Awards.

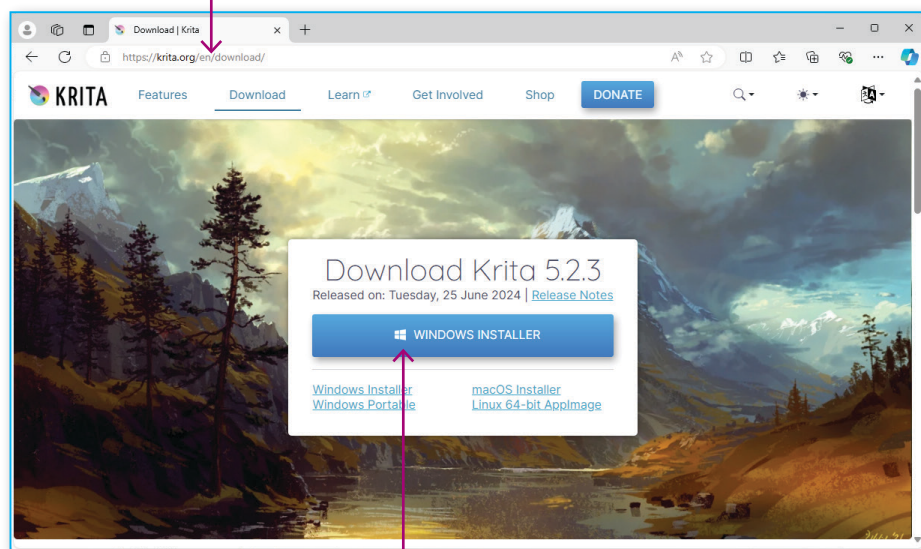
- **Wrap-around mode** – It allows us to create seamless textures and patterns. We can press the 'W' key while painting to toggle wrap-around mode.
- **Resource Manager** – It lets us import brush and texture packs from other artists to expand our tool set. This enables sharing of new brushes that artists create.



DOWNLOADING AND INSTALLING KRITA

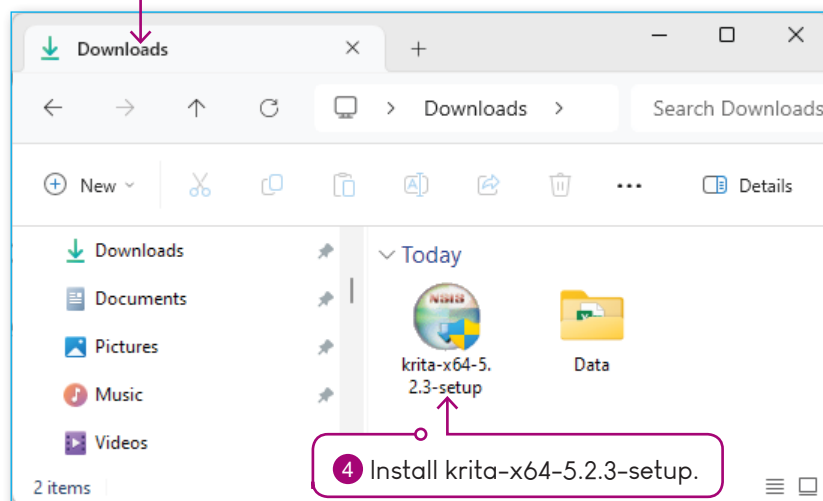
Downloading Krita, a popular open-source digital painting software, involves a few simple steps. Here's a step-by-step guide:

- 1 Open your web browser and go to the official Krita website at <https://krita.org/en/download/>



- 2 Click on the **WINDOWS INSTALLER** button. This will save the installer file to your computer.

- 3 Open **Downloads** folder.



Once the installation is complete, you can start the Krita application by opening it from the Start menu on your Windows operating system.

Krita has been downloaded over 5 million times since it was first released in 2009.

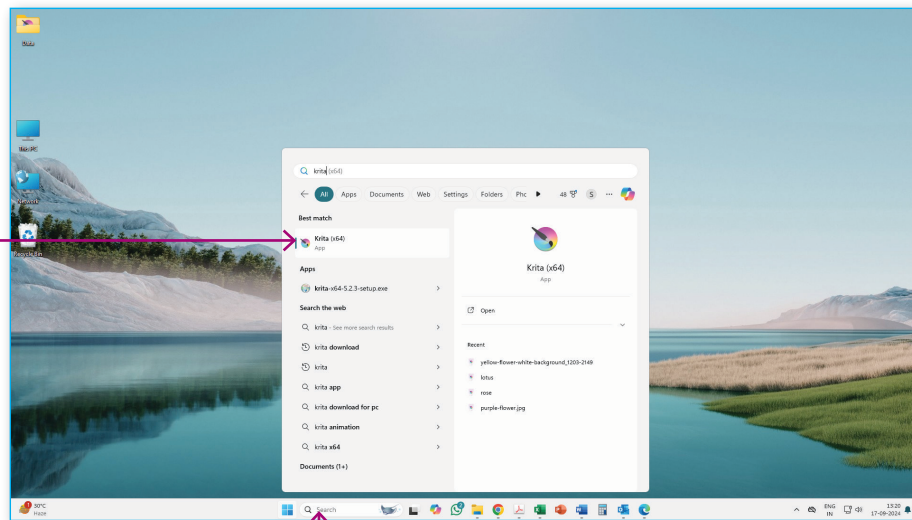
PURE
FACT



STARTING KRITA

To start Krita, follow these steps:

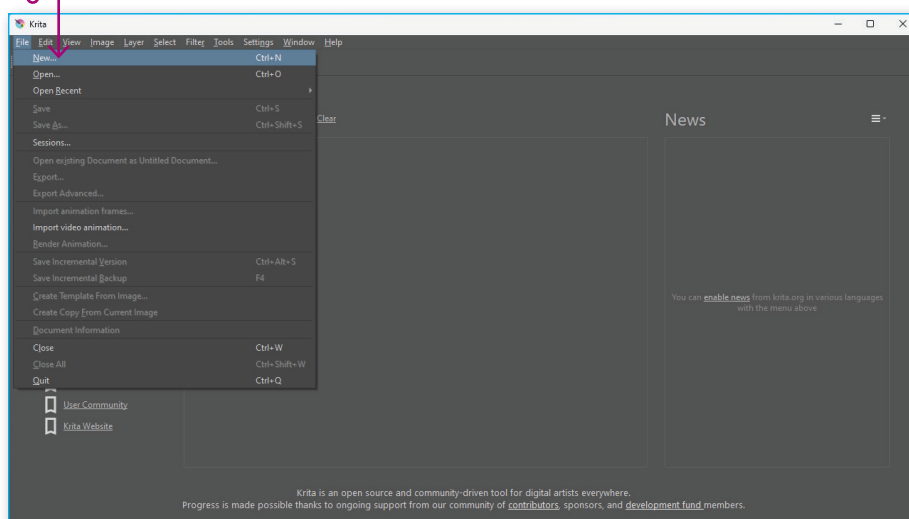
2 Click on
Krita.



1 Type Krita in the Search box.

A welcome screen appears which will have the option to create a new file or open an existing document.

3 Click on **New** from the **File** menu.



SHORT
KEY

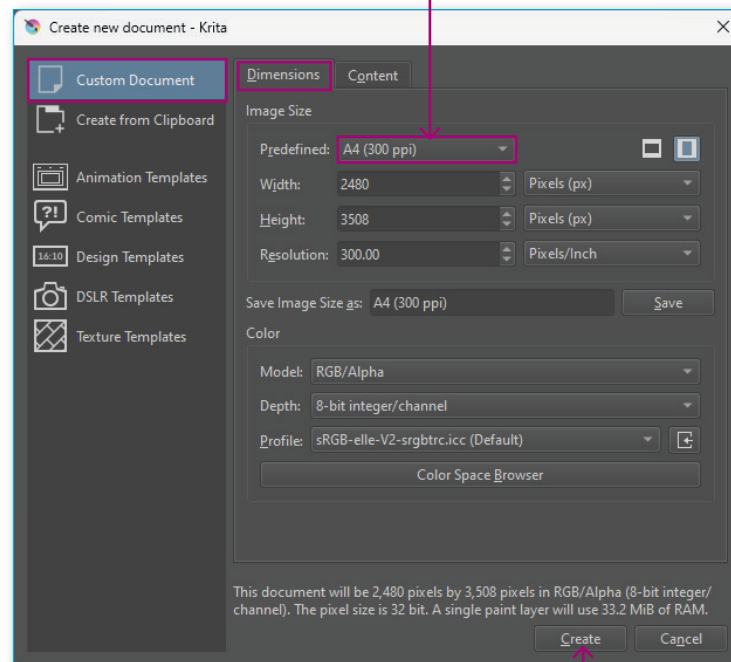
Creating a New
Document:



Or

Click on the **Create new document** button on the welcome screen. A **Create new document** dialog box appears.

4 In the **Dimensions** tab choose A4 (300ppi) or any size that you prefer from the **Predefined** drop down list.



5 Click on the **Create** button.

A New Krita Document window appears on your computer's screen.

DIMENSIONS TAB

This tab contains the settings related to the file. The common options under this tab are:

- **Width and Height:** Used to specify the width and height of the new file in pixels, centimeters, inches, millimeters, points and picas.
- **Resolution:** Used to specify the number of pixels per inch. More resolution, makes the image more clear while low resolution makes the image blur.
- **Color Model:** Used to specify the number of colors that can appear in the image. You can choose RGB, Grayscale, CMYK and Lab color modes. The CMYK color model defines colours in terms of Cyan, Magenta, Yellow and Black. The RGB color model defines colours in terms of Red, Green and Blue. Grayscale is a range of gray shades from white to black.

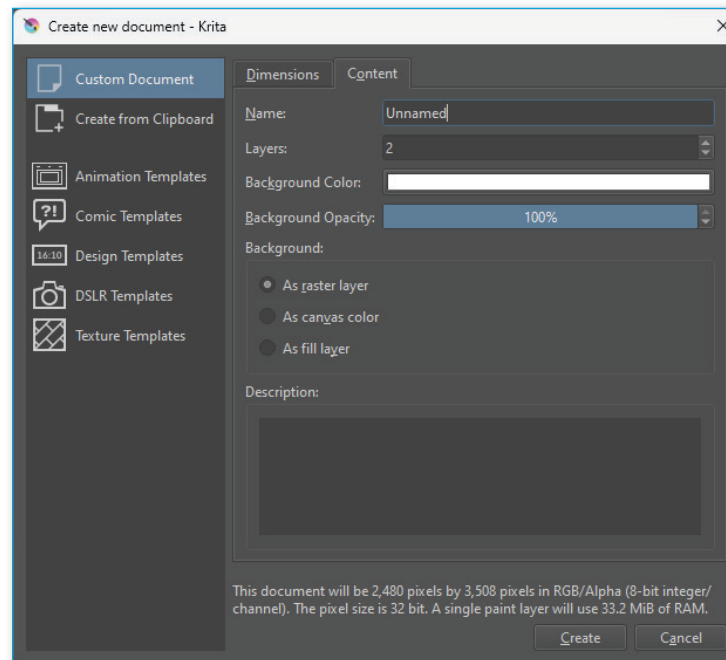
CONTENT TAB

This tab contains the settings related to the file. The common options under this tab are:

- **Name:** Used to specify the new name for the Krita file. By default, the name given to the file is

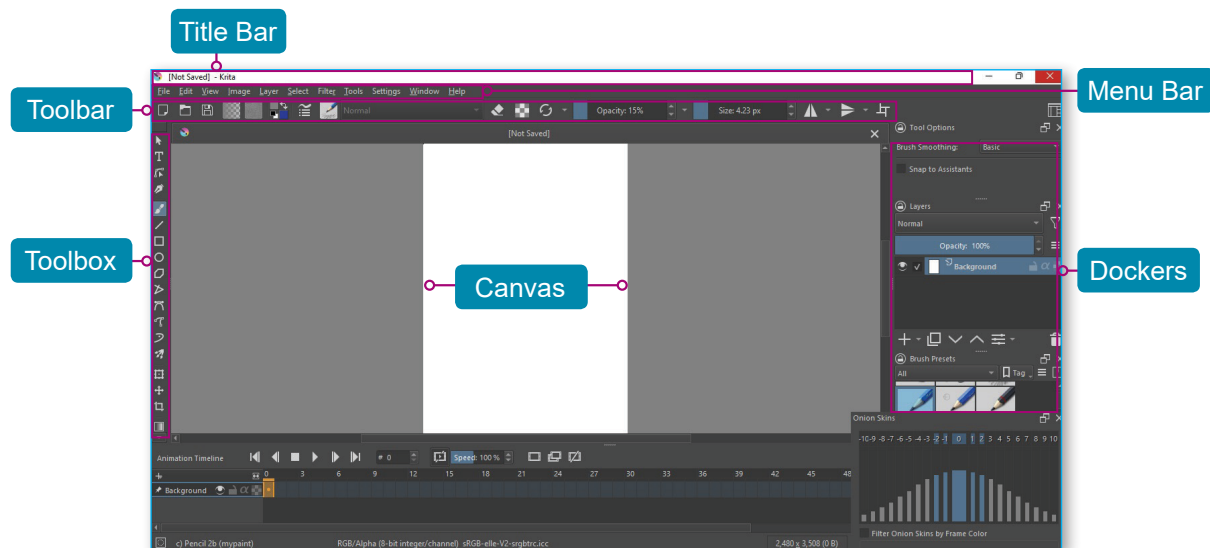
‘Unnamed’.

- **Layers:** Used to specify the number of layers in the file. The layers can be added or deleted while working on the file also.
- **Background Color:** Used to specify the initial background color of the new file.
- **Background Opacity:** Used to specify the intensity of the background color in percentage.



COMPONENTS OF THE KRITA WINDOW

The main components of the Krita window are shown below:



- **Title Bar:** This tab displays the name of the file that is currently being worked on.
- **Menu Bar:** It provides different menus such as File, Edit, View, Image, Layer, etc. to do various

tasks.

- **Toolbar:** It is context specific, i.e., it provides different options for the currently selected tool.
- **Toolbox:** It provides various tools that are used to create, edit, and enhance an image.
- **Dockers:** Dockers grant more detailed control over a tool by providing different options and settings. They are designed to help us pick colours, manage layers, and adjust tool options.
- **Canvas:** It is the white space where you can place your image for editing. Any object placed outside the canvas will not appear in the final result after exporting or printing.



CREATING GRAPHICS AND SHAPES

Let us learn how to create different graphics and shapes using various tools.

LINE TOOL

A **Line Tool** is used to draw straight lines. The **Size** option in the toolbar is used to set the thickness of the line.

To draw a line, follow the given steps:

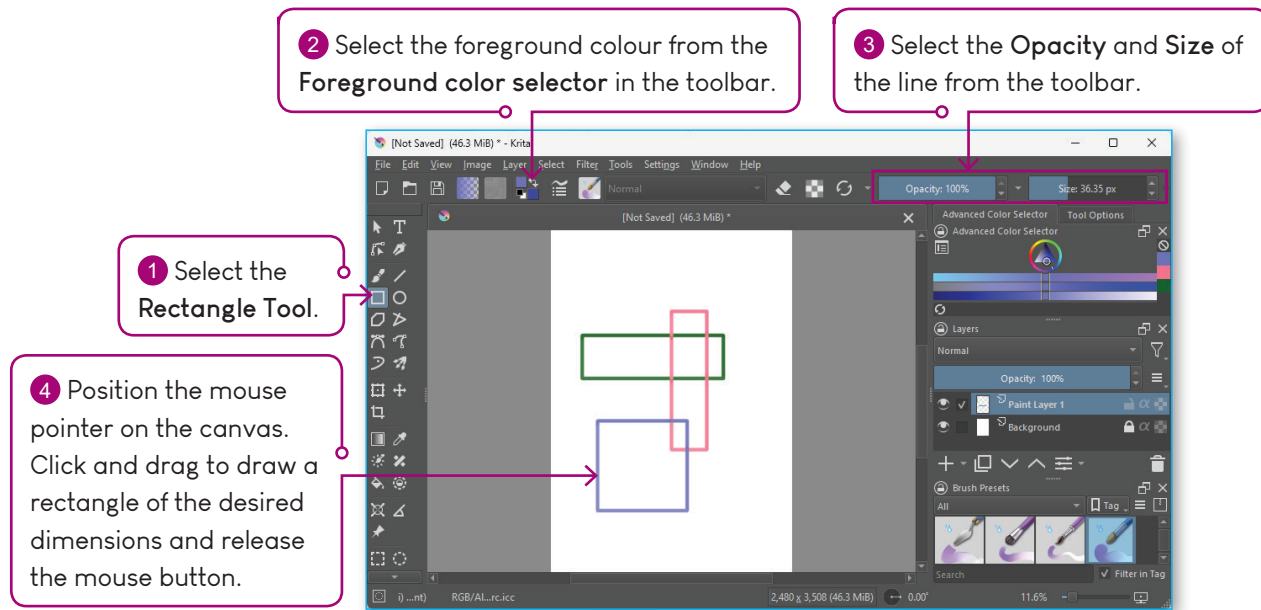
The screenshot shows the Krita software interface with the Line Tool selected. Five numbered steps are overlaid on the interface:

- 1 Click on the **Line Tool**.
- 2 Select the **Foreground colour** from the toolbar.
- 3 Select the **Opacity** and **Size** of the line from the toolbar.
- 4 Select the desired **Brush Presets**.
- 5 Position the mouse pointer on the canvas until the mouse pointer changes to **+**. Click and drag to draw a line of the desired length, and release the mouse button to complete the line.

RECTANGLE TOOL

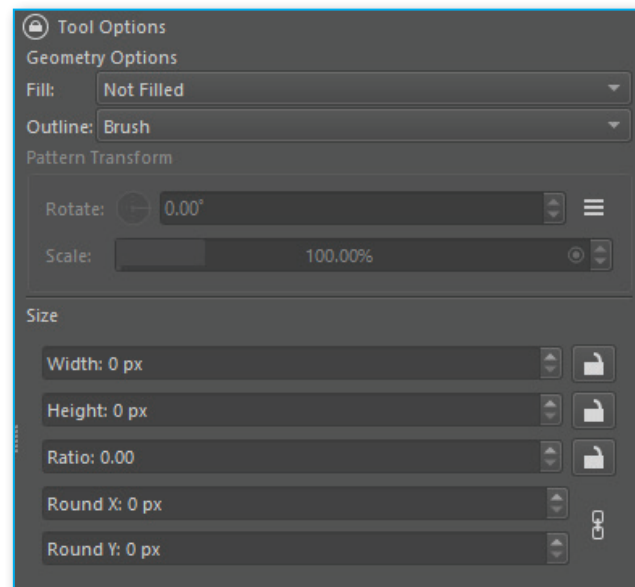
The **Rectangle Tool** is used to draw a rectangle or a square.

To draw a Rectangle, follow the given steps:



The options shown by the **Tool Options** docker for the rectangle tool are:

- **Fill:** This lets you choose the colour that fills the inside of the rectangle. Click the drop-down list to open options like **Not Filled**, **Foreground Color**, **Background Color** and **Pattern**.
- **Outline:** This allows you to pick the colour that outlines the border of the rectangle. Click the drop-down list to open options like **No Outline**, **Brush** or **Brush (Background Colour)**.
- **Size:** This helps to adjust how thick or thin the outline of the rectangle appears. You can type a number or use the arrow buttons to increase or decrease the outline thickness.



ELLIPSE TOOL

The **Ellipse Tool** is used to draw an ellipse or a circle. The **Tool Options** docker displays settings that are similar to those in the Rectangle tool.

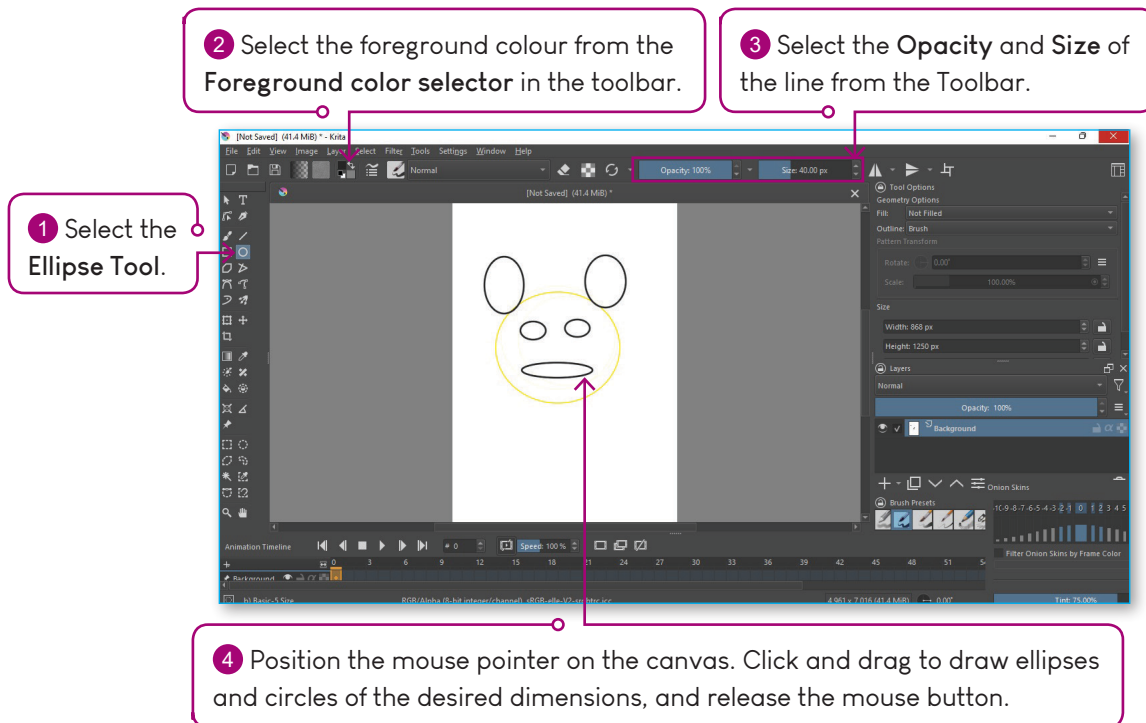
To draw an Ellipse, follow the given steps:



**INFO
MAIL**

Subject: Draw perfect square or circle

To draw a perfect square or circle, hold down the Shift key before releasing the mouse button



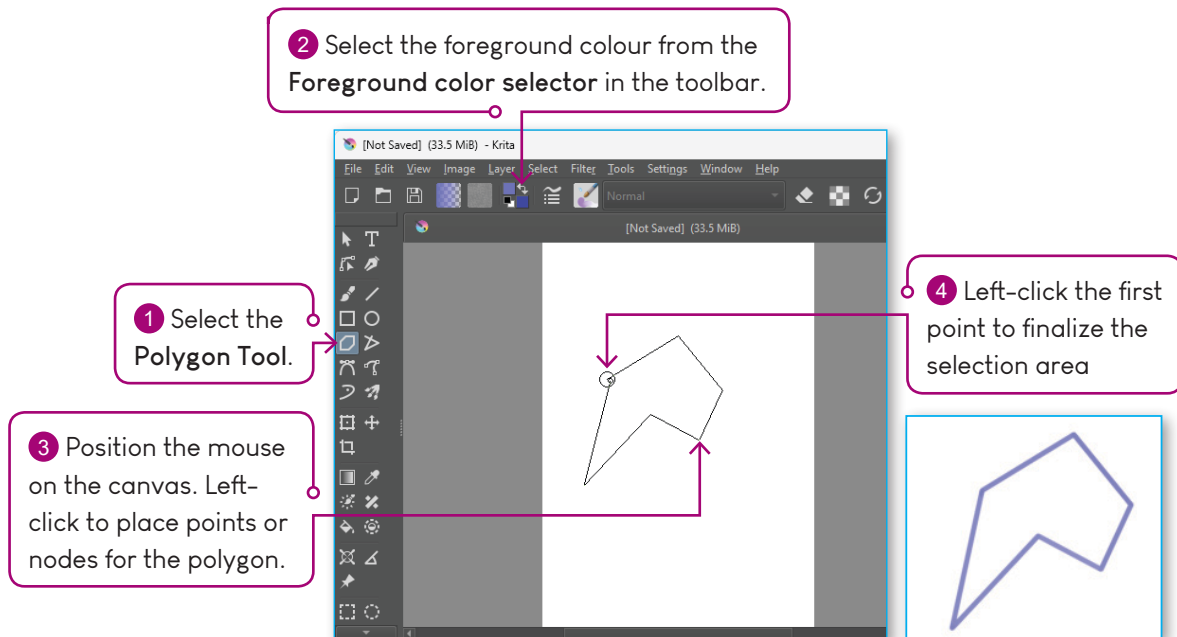
POLYGON TOOL

The **Polygon Tool** is used to draw a polygon. Using the Polygon Tool in Krita allows for precise and customisable polygonal shapes, making it a useful tool for various digital art projects.

To draw a polygon, follow the given steps:

Find on Google

What are vector graphics?

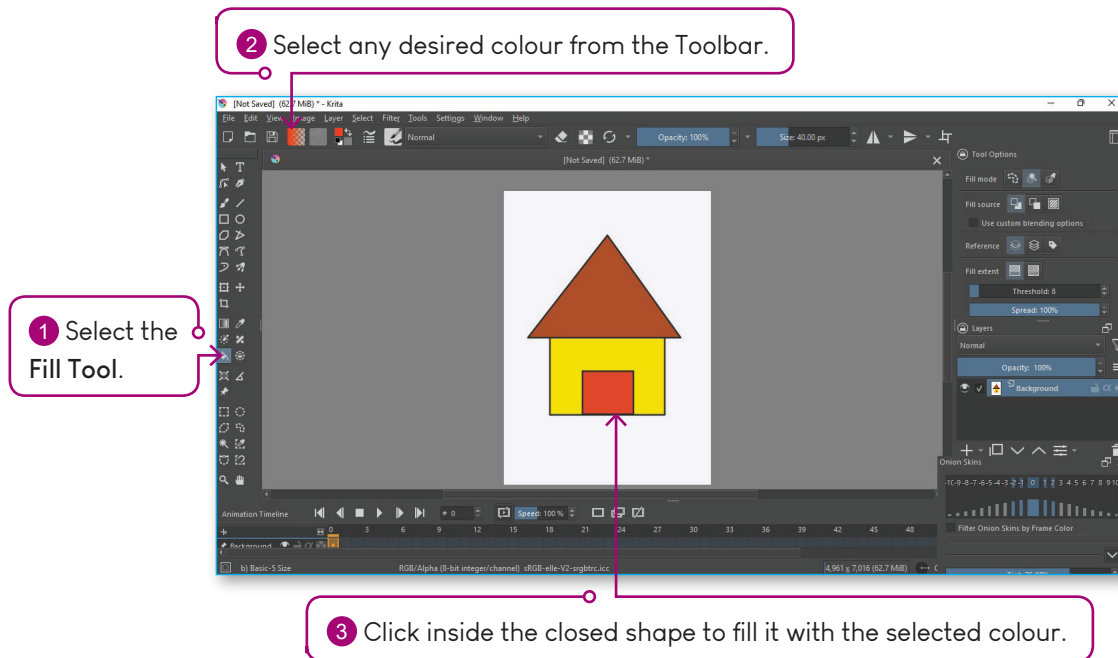


To end the shape, hold the **Shift** key along with the mouse, click or double-left-click to end the polygon.

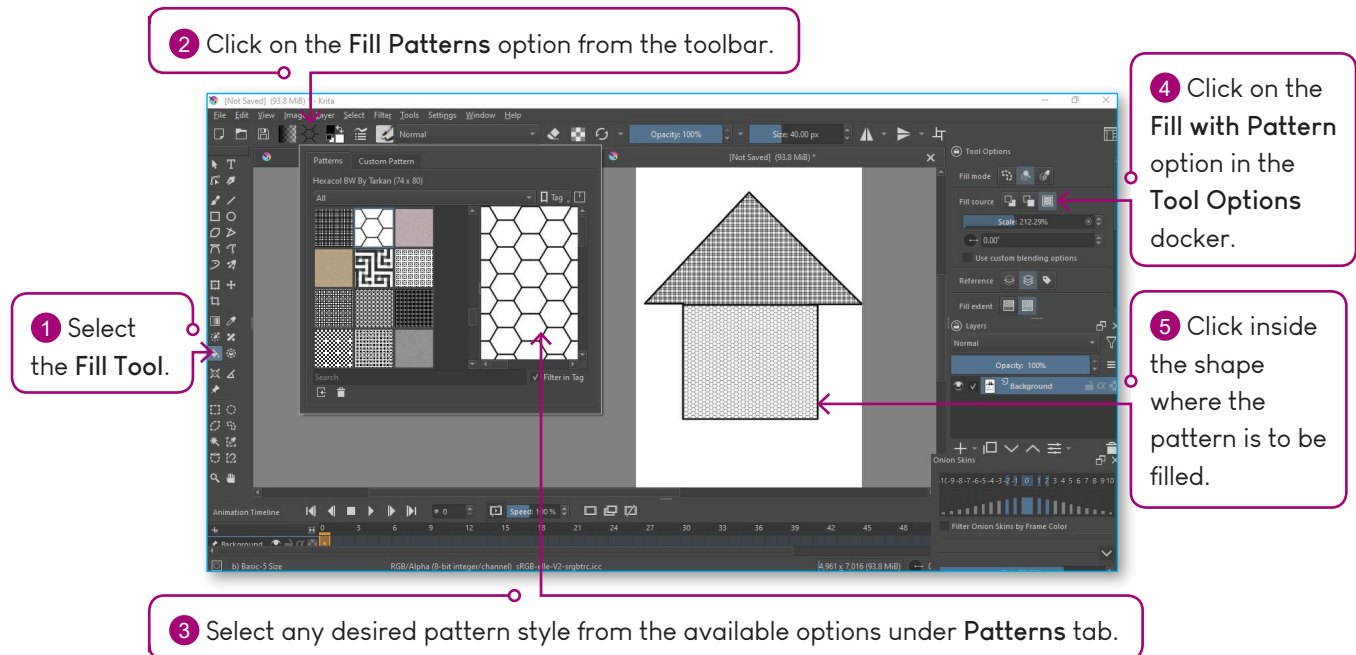
FILL TOOL

The **Fill Tool** is used to fill areas with a solid color, gradient, or pattern. It's used for colouring drawings, creating backgrounds, and applying textures.

To fill colours in a closed shape, follow the given steps:



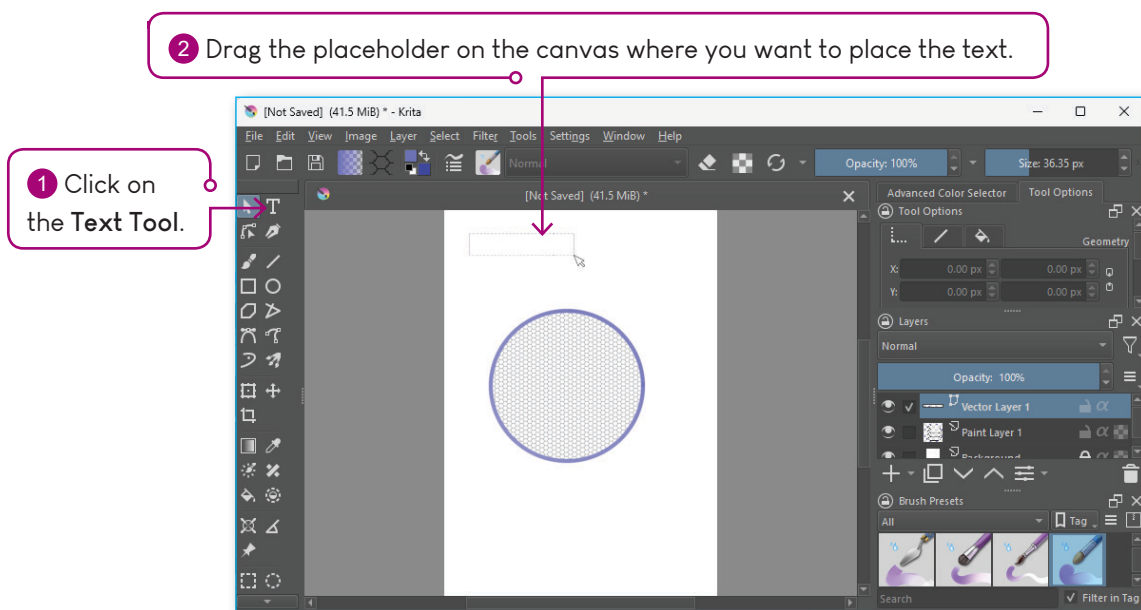
To Fill the shape with a pattern, follow the given steps:



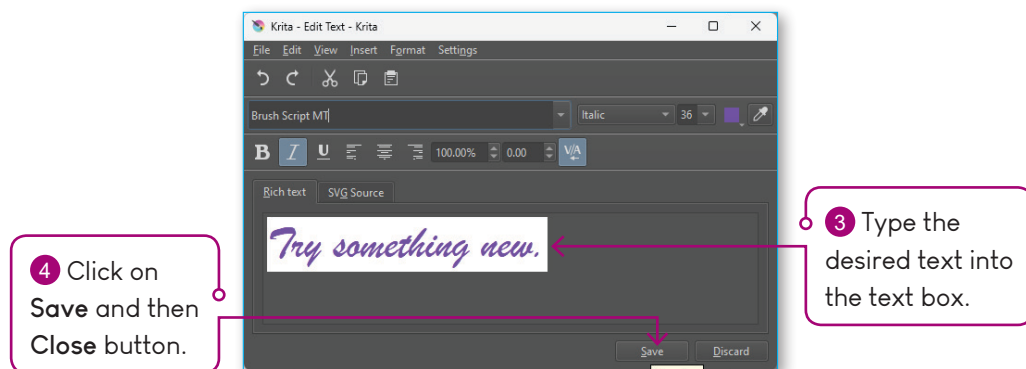
USING TEXT TOOL

The **Text Tool** in Krita can help you add and customise text in your artwork.

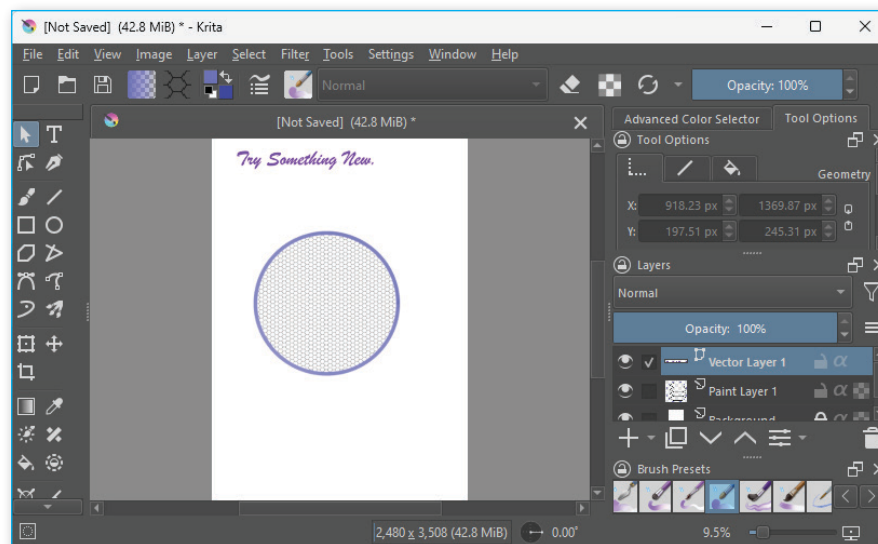
To use Text tool, follow the given steps:



This opens up the **Edit Text** dialog box.



You can change the **Font Family**, **Font Style**, **Font Size**, **Style** (Bold, Italic etc.) and **Alignment** (Left, Center and Right) from the options provided in the **Edit Text** dialog box. The text will appear in the designated area.





INFO MAIL

Subject: Adding text will add a new layer

A new layer is added for text introduced in the document. Therefore, if further changes have to be made in the image, then switch to another layer.

USING BRUSHES

When we open a new document in Krita, the Freehand brush tool is selected by default. Krita offers various types of brushes with adjustable parameters. We can change the parameters of brushes to get the desired result in our work.

To use the Brush tool, follow the given steps:

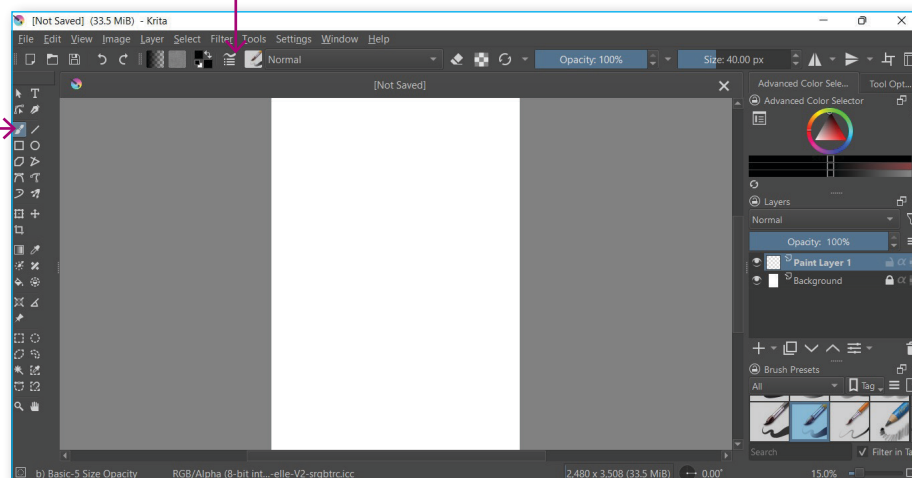
SHORT KEY

To select Brush tool:



2 Click on the **Edit brush settings** button in the toolbar.

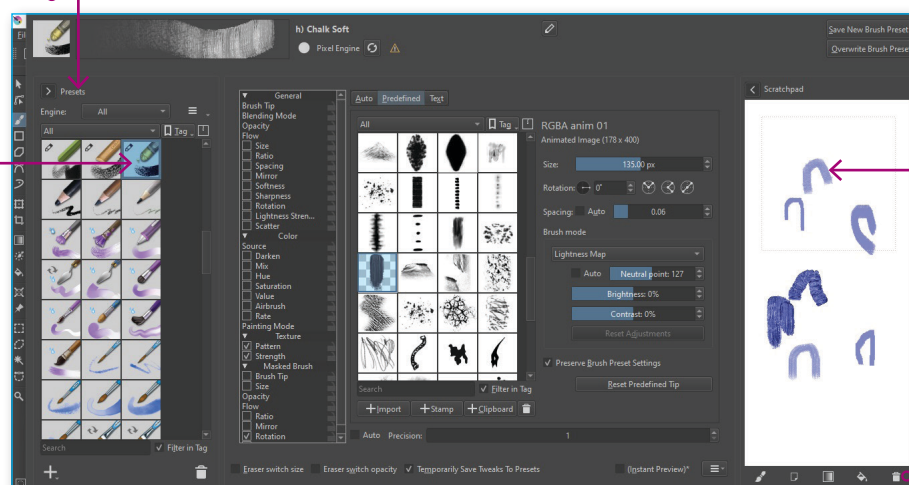
1 Click on the **Freehand Brush tool**.



The **Brush Editor** dialog box opens.

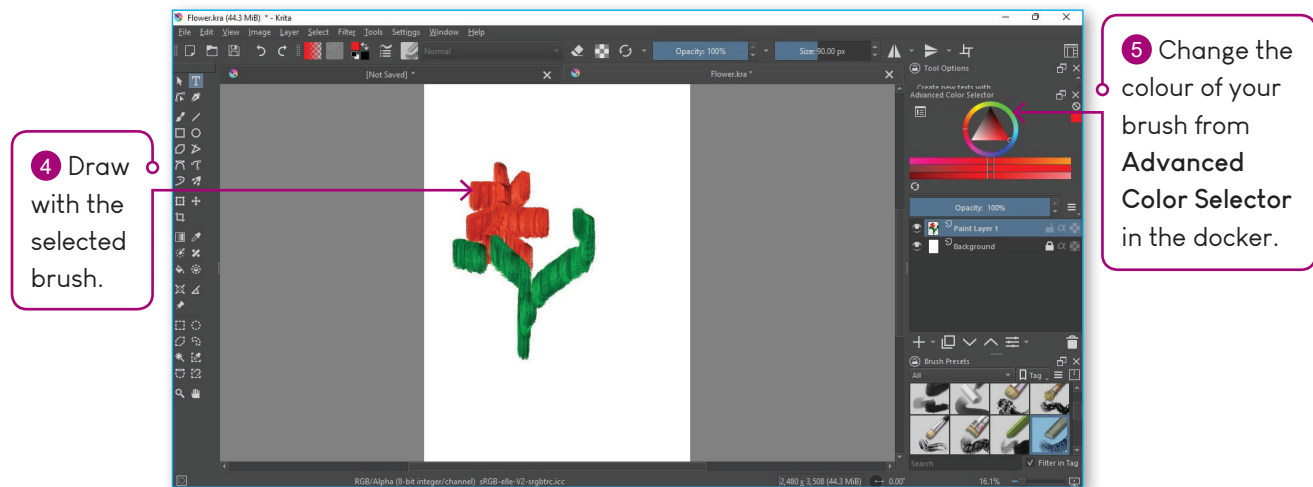
2 Click on the **Toggle showing presets** option.

1 Select the desired brush type.



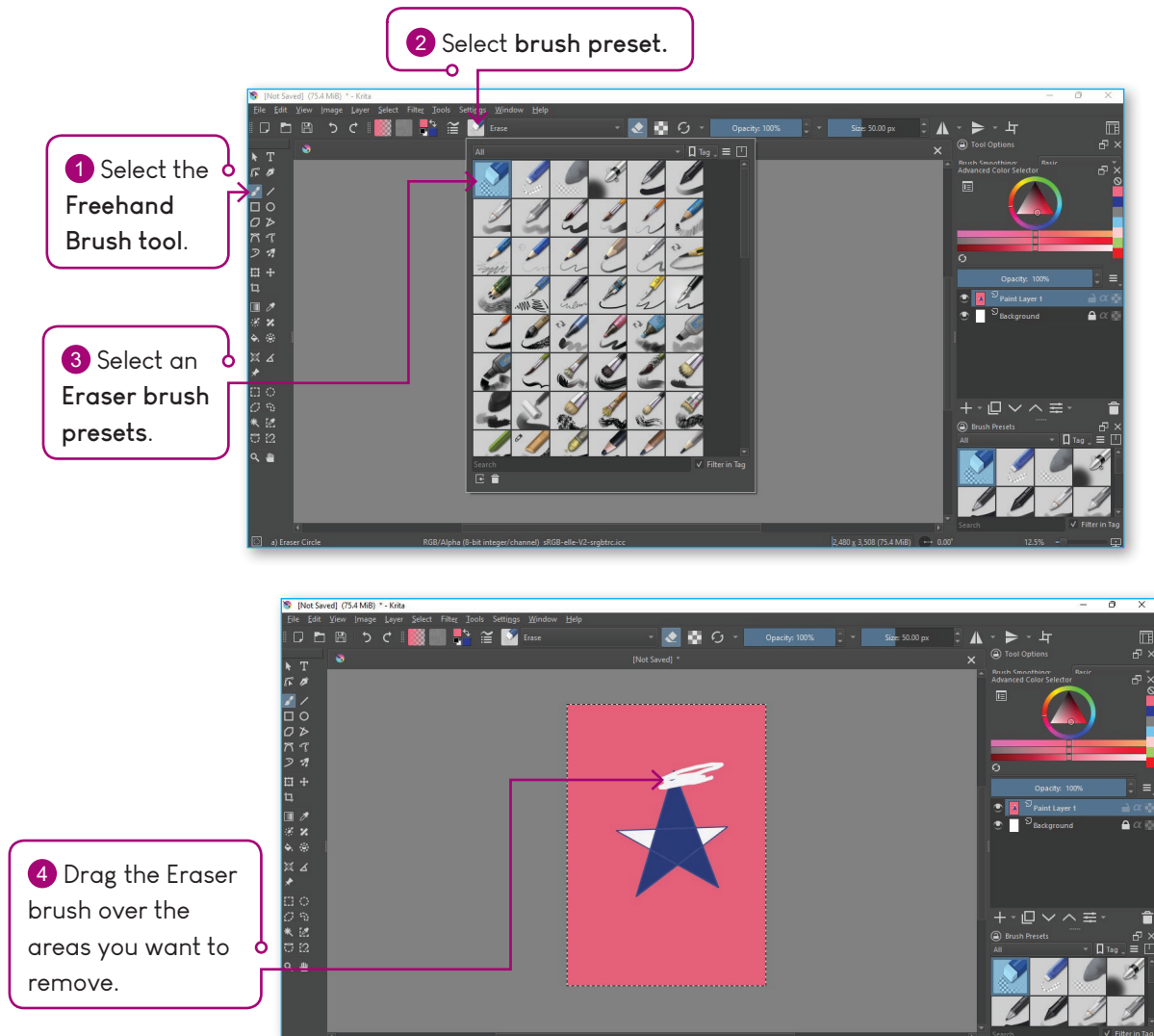
3 Write on **Scratchpad** area to try your brush.

Click on **Reset** area to white **Scratchpad**



ERASING IN KRITA

Krita doesn't have an Eraser tool like Photoshop or Gimp. We can erase in Krita by following the given steps:

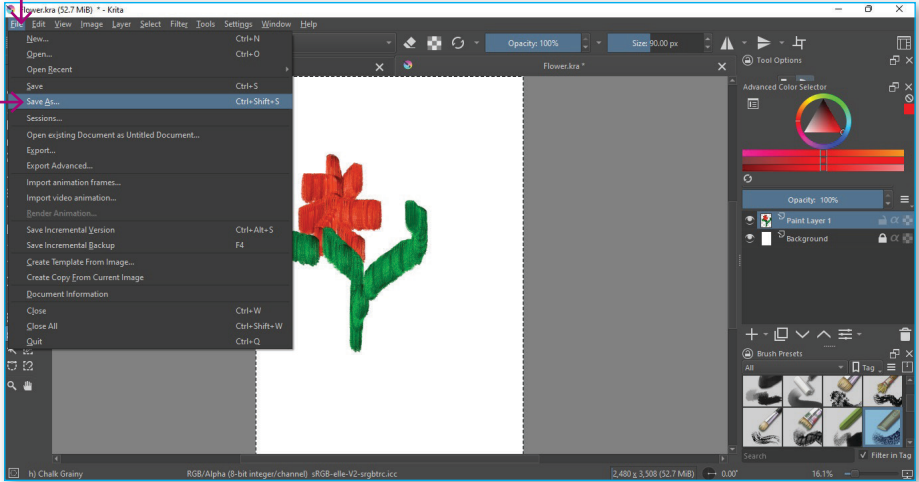


SAVING KRITA FILES

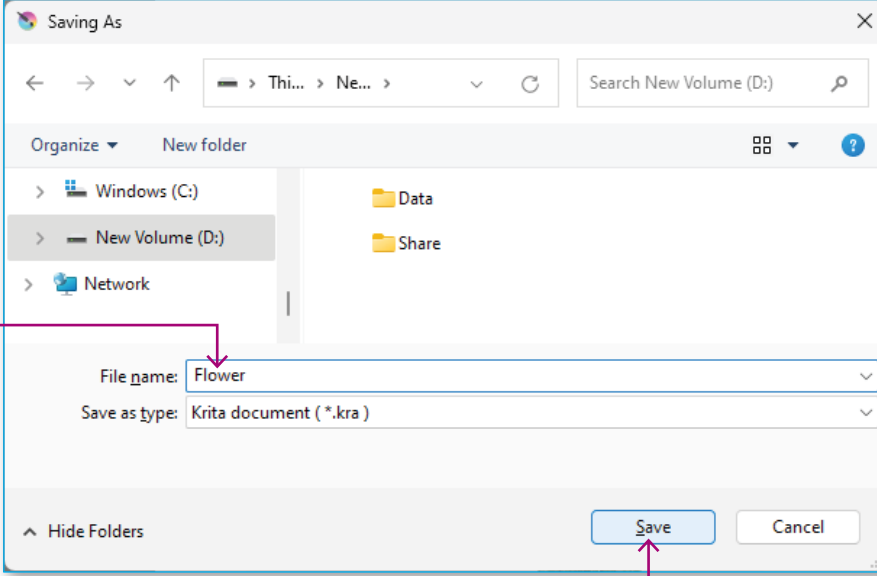
After we finish creating our image, we need to save it.

To save a Krita file, follow the given steps:

- 1 Click on the **File** menu.
- 2 Click on **Save** or **Save As** option.



- 3 Browse and select the location where you want to save the file and enter the desired file name.
- 4 Click on the **Save** button.

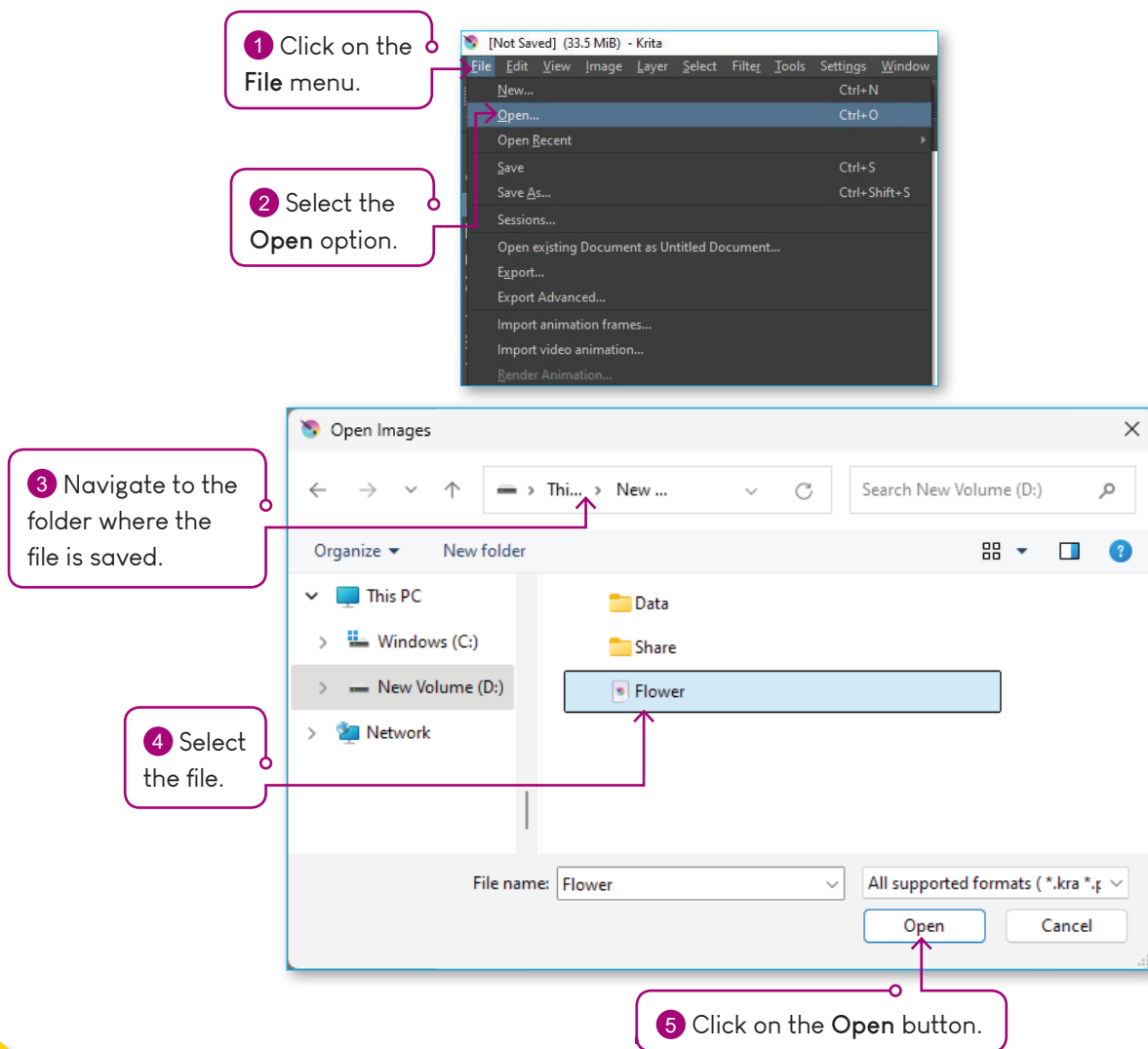


The default extension for the Krita file is .kra. We can also export our work to other formats like .jpeg, .bmp, .png, .pdf etc.



OPENING KRITA FILES

To open a saved file, follow the given steps:



CLOSING KRITA FILES

To close a Krita file, follow the given steps:

Step 1: Click on the **File** menu

Step 2: Click on the **Close** option.

Step 3: Krita prompts you to save the file if you haven't already saved it. Click **Yes** button to save the changes if needed or **No** to close the file without saving changes.